



## GENERAL TECHNICAL DATA

### dimensions:

- height: 74 cm
- seat height: 44 cm
- width: 185 cm
- depth: 174 cm

- weight:**
- with softwood: 60 kg
  - with hardwood: 79 kg

- materials:**
- stainless or carbon steel
  - hardwood or softwood

## DESCRIPTION

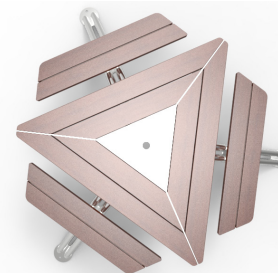
Welded structure combined with wooden seat. Welded construction of steel sheets 10 mm thick in 1.4301 polished stainless steel and pipes 140 mm in diameter and 4.5 mm thick in 1.4301 polished stainless steel. The hammock seat using 41 wooden planks of rectangular cross-section with dimensions of 45 x 60 x 760 mm made of hardwood impregnated and oiled twice.

All street furniture elements must be properly anchored according to the manufacturer's technical instructions. The manufacturer is not liable for damage caused by negligent use or failure to follow instructions.



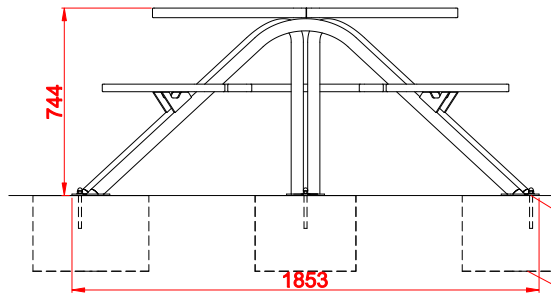
*Filip Babiarz*

product:  
MARS picnic table 13.500  
version: 2  
designer: Filip Babiarz

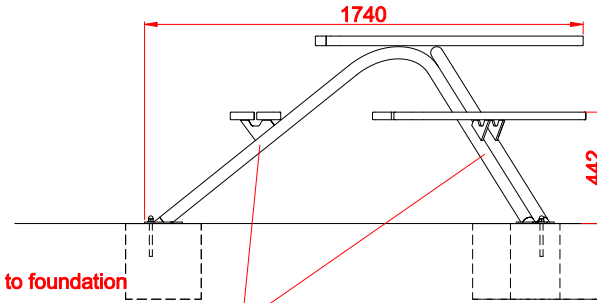


In accordance with the Polish Law on Copyright and Related Rights of 04.02.1994 (Official Journal of Laws No. 24, item 83, corrected: Journal of Laws No. 43, item 170) and in accordance with the EU copyright legislation including all EU directives and regulations on copyright, Zano Miroslaw Zarotyński Company, reserves the copyright of drawings, descriptions, 3D models, renderings, graphics, content contained in offers, attachments to offers and all other documents. Its content is the intellectual property of ZANO Miroslaw Zarotyński company. The use of author's ideas, solutions, copying, distribution of photos, graphics or fragments of graphics, descriptive texts, for profit, without the permission of the author - ZANO Miroslaw Zarotyński company - is prohibited and constitutes a copyright infringement and is punishable.

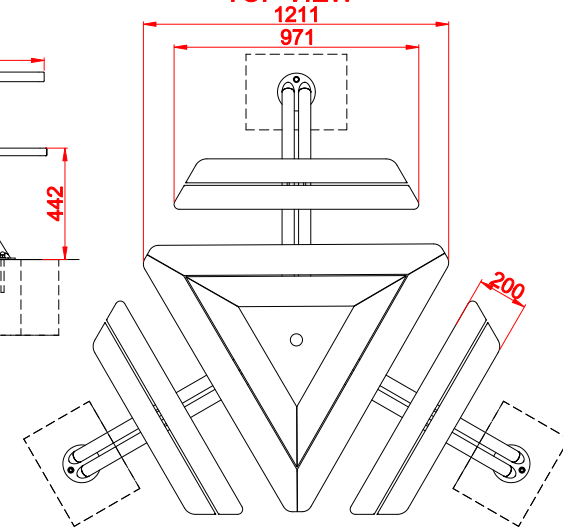
FRONT VIEW



SIDE VIEW



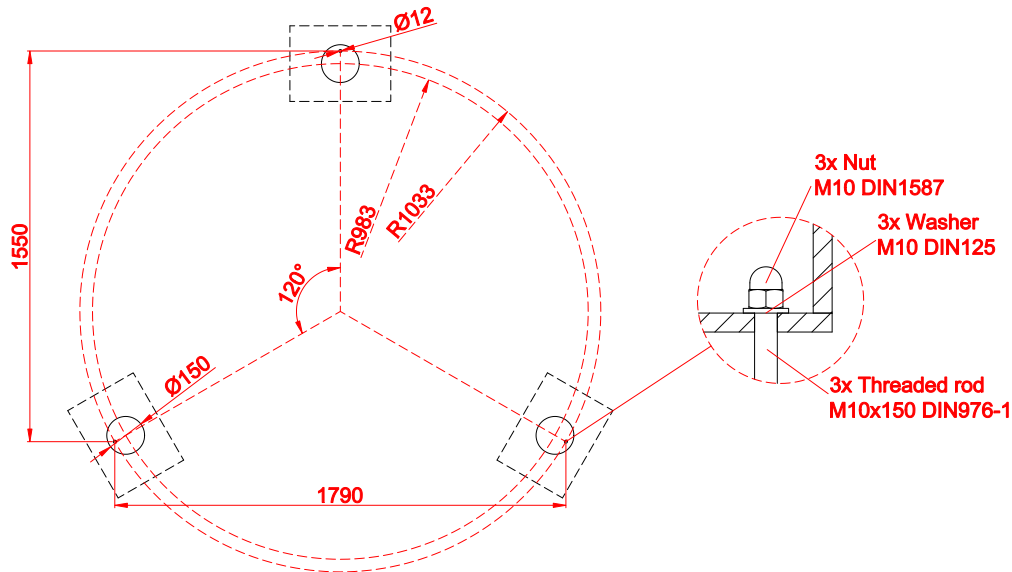
TOP VIEW



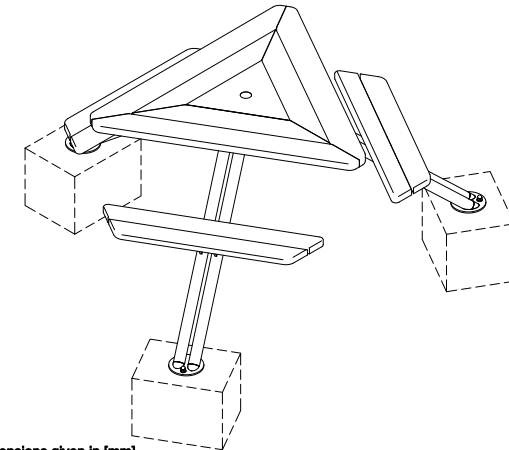
Ground level  
Installation:  
Attached by bolts to foundation  
Exemplary concrete foundation

Steel types:  
- Construction steel (S235JR, DC01) galvanized and powder coated according to RAL palette  
- Stainless steel (1.4301) brushed

MOUNTING HOLES SPACING



ISOMETRIC VIEW



Dimensions given in [mm]

Mars Picnic Table  
13.500

In accordance with the Polish Law on Copyright and Related Rights of 04.02.1994 (Official Journal of Laws No. 24, item 83, corrected: Journal of Laws No. 43, item 170) and in accordance with the EU copyright legislation including all EU directives and regulations on copyright, Zano Miroslaw Zarolyfki Company, reserves the copyright of drawings, descriptions, 3D models, renderings, graphics, content contained in offers, attachments to offers and all other documents. Its content is the intellectual property of ZANO Miroslaw Zarolyfki company. The use of author's ideas, solutions, copying, distribution of photos, graphics or fragments of graphics, descriptive texts, for profit, without the permission of the author - ZANO Miroslaw Zarolyfki company - is prohibited and constitutes a copyright infringement and is punishable.



ZANO Street Furniture  
Lindego 7A, 30-148  
Cracow, Poland  
phone: +48 12 200 20 53  
email: office@zano.pl

Number:	300919-v2	
Sheet:	A4	
Scale:	1:30	
Mass:	with soft wood	60 kg
	with hard wood	79 kg