

Mounting instruction large play equipment „angulus 2A“

Item-No. 51 7522 601

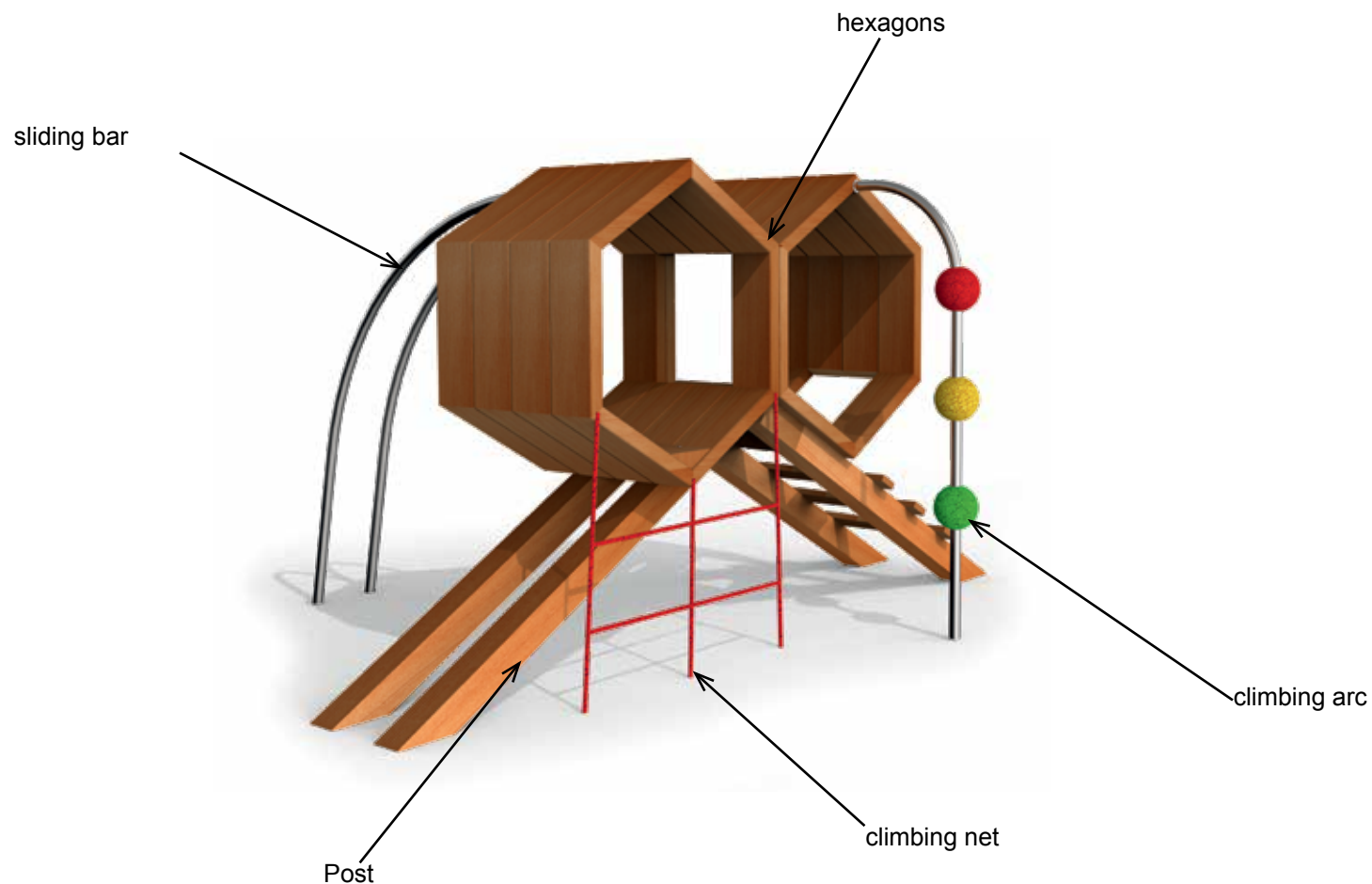


Diagram 1: Overall view of play equipment with description of individual elements

Mounting instruction large play equipment „angulus 2A“

Item-No. 51 7522 601

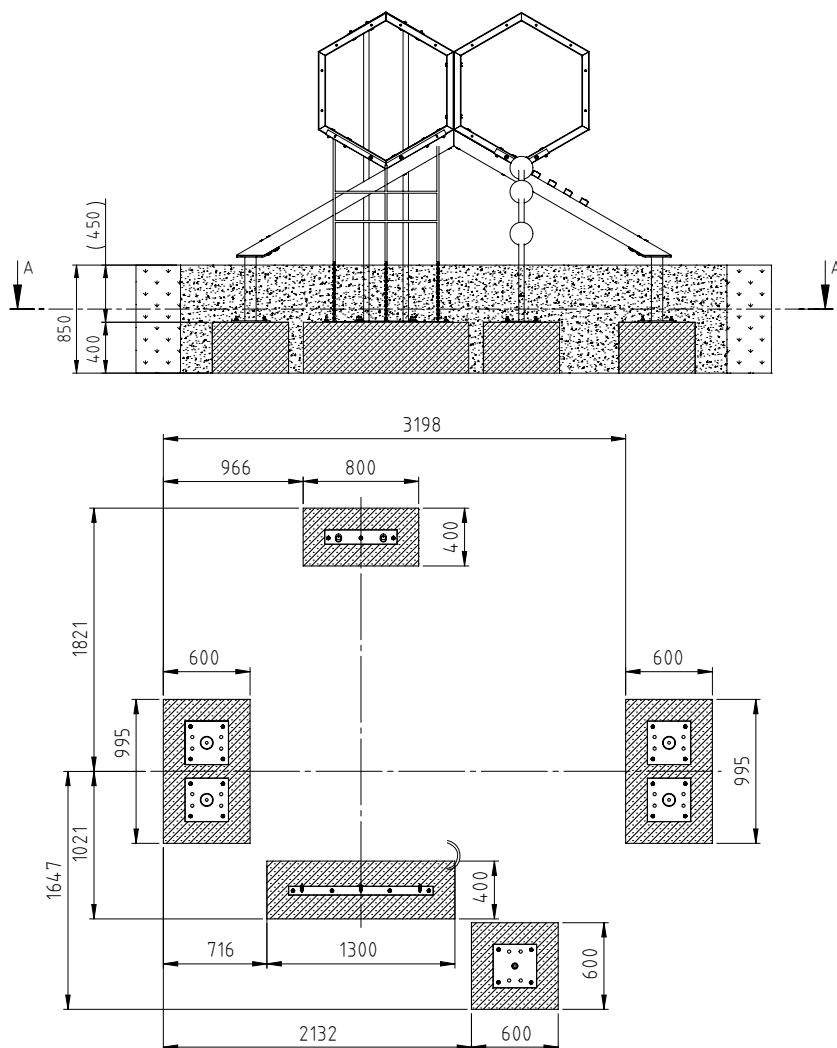


Diagram 2: Foundation plan with dimension details „angulus 2“

1. Select the play equipment location in consideration of the required safety area (see Diagram 3: 6300x5250mm).
2. Carry out excavation work for 5 foundations as shown in Diagram 2. After excavation, compress the foundation floor.
Note: The combination equipment is built in on the play level. Pay attention to items marked „game level“ of play equipment!
3. Setup the two main foundations (LxWxH 995x600x400mm), and the foundation for the climbing arc (LxWxH 600 x 600 x 400mm), the foundation for the sliding bar (LxWxH 800x400x400mm) and the foundation of the climbing net (LxWxH 1300x400x400) acc. to the dimensions indicated in diagram 2 the quality class C 20/25 with horizontal reinforcement.

Reinforcement plan:

Concrete foundation with reinforcement

Main foundation: BSt 500S

Ever 4 stirrups Ø 8 mm lengthwise and cross

Concrete cover $h' = 3$ cm

Concrete quality class C 20/25

Foundations for attachment parts are no-reinforced

4. After a setting period of 10-14 days, depending on weather conditions and foundation size - clean the surface of the foundations and start with the installation of the combination equipment.

Mounting instruction large play equipment „angulus 2A“

Item-No. 51 7522 601

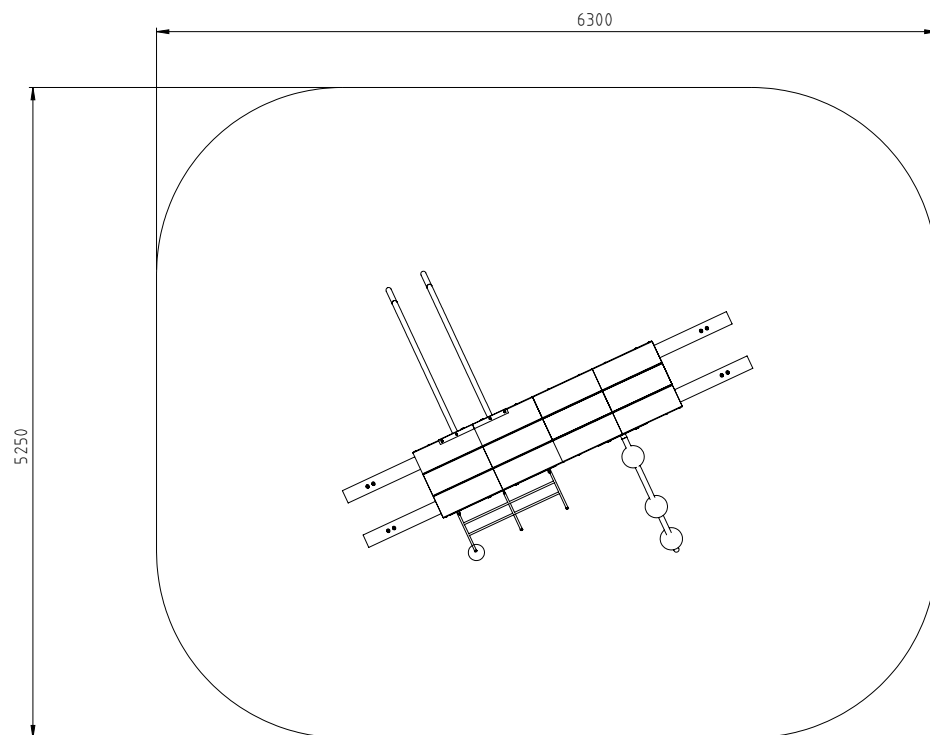


Diagram 3: Minimum space

5. Place the premounted construction of the hexagons at the posts as described in diagramm 1 and 2 on the foundation.
Note: Do not screw the base plates onto the foundations yet!
6. Connect the climbing arc, the sliding bar, and the climbing net with the hexagons as described in diagram 4 and fix it (screws included in delivery).
7. Align the play equipment more on the foundations.
Note: Avoid sagging of the climbing net.
8. Drill holes into all foundations and screw the play equipment into the foundations with the included heavy-duty dowels.
9. Fill up and compress the holes between the foundation and the foundation hole with the excavation.
10. Seal the foundation with the safety cover required for the height of fall indicated.
Critical drop height: 900 mm.
Recommended surface material: grass, sand, wood chip, gravel, synth. fall protection.
11. Do not allow children to use the equipment before the installation has been finished.
12. After 3 months, check the screws at the joints and retighten them if necessary.

Mounting instruction large play equipment „angulus 2A“

Item-No. 51 7522 601

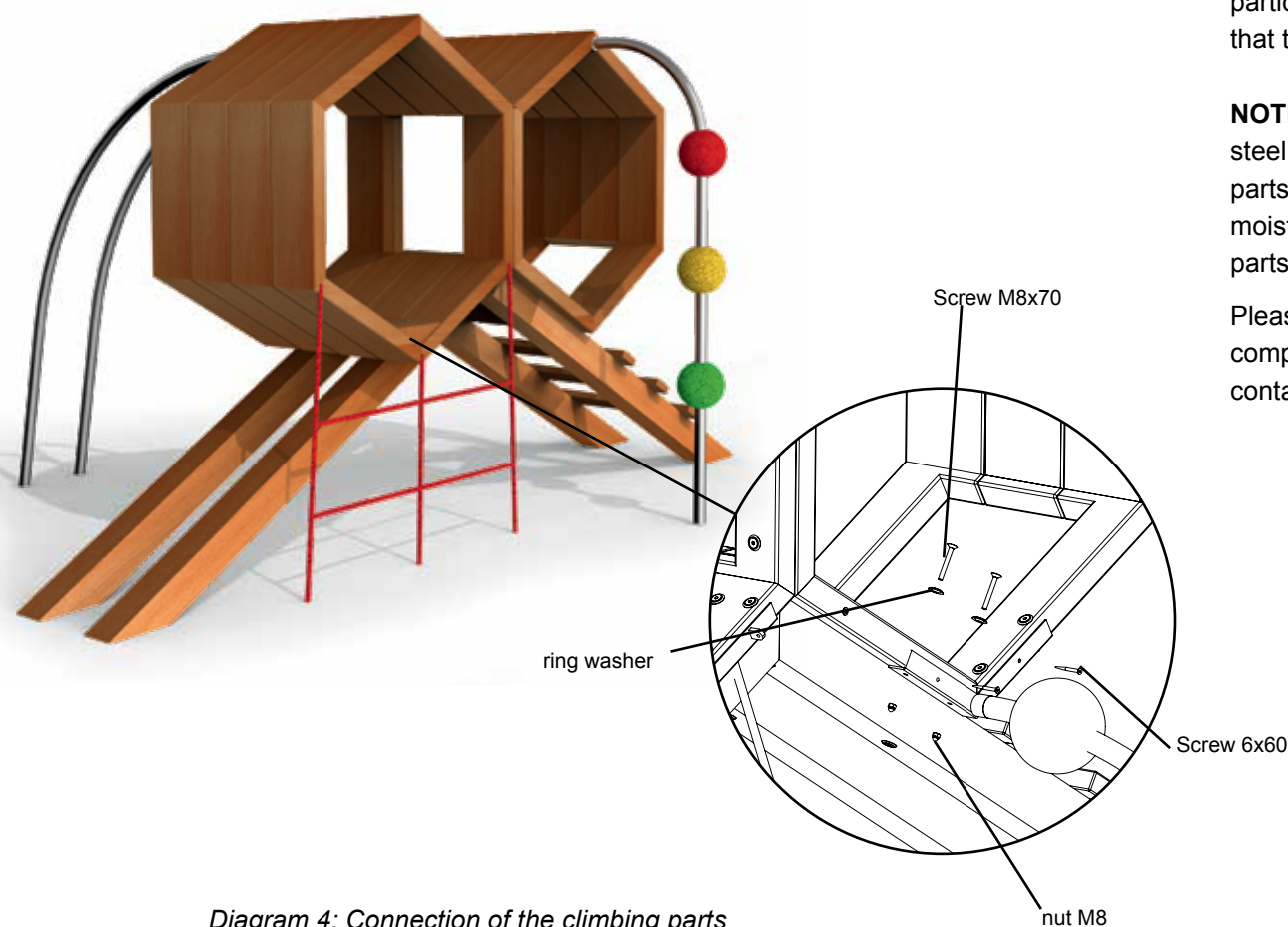


Diagram 4: Connection of the climbing parts

Attention: If the play equipment has been incompletely installed or partly dismantled when carrying out maintenance and repair work, this may lead to particular risks of injury for the user. For this reason, make clearly visible that the equipment shall not be used in such cases.

NOTE: Play equipment, which contain components made of stainless steel should not come with „normal“ steel parts in contact. Those steel parts may rub off and leave small steel particles in combination with moisture brown rust stains. If such corrosion occur on stainless steel parts, they are fine to remove with an abrasive (240 grit).

Please take care when transporting and setting up the fact that the components are made of stainless steel with no „normal“ steel parts in contact.

Mounting instruction large play equipment „angulus 2A“

Item-No. 51 7522 601

In order to preserve a good visual appearance of your stilum playground equipment over a long period one should take care of maintenance of the stainless surface even despite of their corrosion resistance. Especially areas, which can not be reached by rainfall, should be frequently cleaned from dirt and deposits due to air pollution and dirt caused by the atmosphere. Light soiling can easily be removed by using a high pressure cleaner. For persistent deposits use a clean cloth moistened with a special liquid cleaner (e.g. on phosphoric acid) and rinse off with clear water after a short application time. During cleaning with mild abrasive components, only wipe over stainless steel surface in polishing direction. For heavily soiled surfaces, polishes can be used (e.g. for cleaning chrome on cars) or for greasy and oily dirt alcoholic cleaning agents and solvents (e.g. ethyl alcohol, isopropyl alcohol or acetone). However, it should be noted that the dissolved soiling is not spread over the surface again. Do not use any chloride or hydrochloric containing cleaning products nor scouring powder, bleaching - or silver polish cleaner. Cleaning intervals depend on type and degree of soiling as well as on demands made on optical characteristics. Therefore cleaning is advisable at intervals of six to twelve months – whereby in the case of strong soiling it is appropriate to clean the playground equipment at intervals of 3 to 6 months.