



Product Service

CERTIFICATE

No. Z2 15 03 50646 047

Holder of Certificate: **Norleg A/S**

Virkefeltet 1
8740 Brædstrup
DENMARK



Certification Mark:

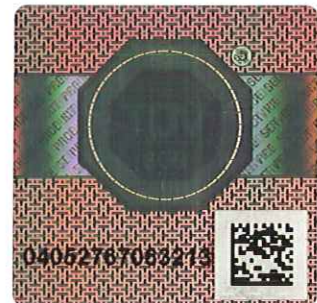


Product: **Playground equipment**

The product was tested on a voluntary basis and complies with the essential requirements. The certification mark shown above can be affixed on the product. It is not permitted to alter the certification mark in any way. In addition the certification holder must not transfer the certificate to third parties. See also notes overleaf.

Test report no.: 713059489-1

Valid until: 2020-03-29



Date, 2015-04-07
Page 1 of 2

Harald Bardowicks
(Harald Bardowicks)

**CERTIFICATE****No. Z2 15 03 50646 047****Model(s):**

LE20500, LE20512, LE20513, LE20516,
 LE20520, LE20521, LE20524, LE20528,
 LE20529, LE20530, LE20531, LE20532,
 LE20533, LE20534, LE20535, LE20538,
 LE20539, LE20541, LE20543, LE20591,
 LE20592, LE20593, LE20894, LE20912,
 LE20913, LE20914, LE20915, LE20924,
 LE20926, LE20952, LE20960, LE20962,
 LE20964, LE20966;

Parameters:

Type: description, safety area;

LE20500: post bridge, 4.2 x 6.0 m
 LE20512: battering ram, 4.45 x 5.75 m
 LE20513: gallows with rolling log, 3.25 x 5.8 m
 LE20516: ropes between Robinia trunks, 3.25 x 5.8 m
 LE20520: balancing posts, 3.9 x 5.8 m
 LE20521: four balancing blocks, 4.15 x 6.7 m
 LE20524: posts, 3.2 x 5.5 m
 LE20528: balancing posts, Ø 3.2 m
 LE20529: balancing beam, 3.2 x 5.8 m
 LE20530: balancing beam, 3.0 x 5.8 m
 LE20531: beam on springs, 5.8 x 3.2 m
 LE20532: balancing posts, 3.0 x 5.8 m
 LE20533: beam, 3.0 x 4.7 m
 LE20534: climbing pyramide, Ø 6.7 m
 LE20535: beam, 3.0 x 4.5 m
 LE20538: stilts, 3.0 x 3.3 m
 LE20539: somersault, 3.0 x 5.8 m
 LE20541: somersault, 3.0 x 4.4 m
 LE20543: Balance at many different levels, 4.2 x 4.3 m
 LE20591: somersault, mini, 3.0 x 4.4 m
 LE20592: somersault bar, mini, 3.0 x 5.8 m
 LE20593: somersault bar, mini, 3.0 x 7 m
 LE20894: sand table, Ø 3.6 m
 LE20912: balancing posts, 3.7 x 5.6 m
 LE20913: Stairway with rope, 3.2 x 5.9 m
 LE20914: hammock, 6.38 x 3.75 m
 LE20915: Stairway with rope, 4 m, 3.2 x 7.4 m
 LE20924: twined rope, 4,3 x 6,3 m
 LE20926: platform with post, 3.9 x 7.1 m
 LE20952: balancing equipment, 4.4 x 5.7 m
 LE20960: balancing bridge, 3.3 x 6.0 m
 LE20962: post, 4.9 x 7.6 m
 LE20964: post, 3.9 x 6.8 m
 LE20966: post, 3.2 x 5.7 m

Tested according to:

Material: robinia, larch, steel;
 EN 1176-1:2008

Production Facility(ies):

50646

Page 2 of 2