

# **Bouncing Element**

**Art. No. 8700**

**Installation and maintenance manual**



# Index

1. Bill of material .....	2
2. Technical data and notes.....	2
3. Installation and assembly instructions .....	3
4. Dimensions .....	4
5. Safety and user notes .....	7
6. Documentation .....	7
7. Parts .....	8
8. Maintenance manual.....	16
Work documentation .....	22

## 1. Bill of material

- Bouncing Element fully assembled for installation
- 4 eyebolts M12 for lifting

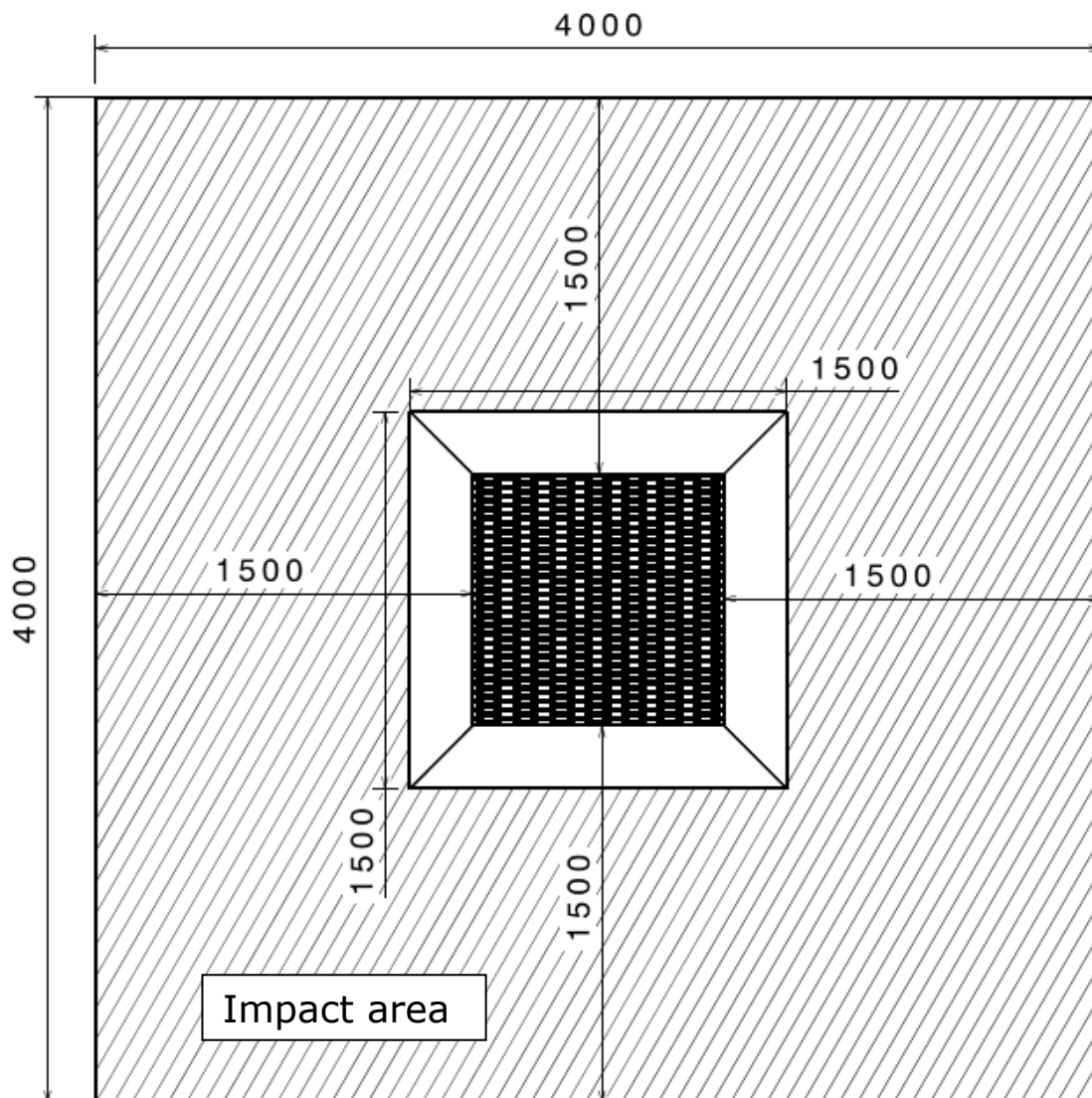
## 2. Technical data and notes

- Impact surface (LXW): 4000x4000 mm
- Maximum fall height: 1000 mm
- Fall area (LXWxH): 4000x4000x1000 mm
- Kind of usage : standing/bouncing
- Required free space: 1500 mm around the jumping surface
- 3500 mm above the jumping surface
- Device space (LXWxH): 1600x1600x0 mm
- Dimensions shipping (LxWxH): 1500x1500x500
- Weight complete: 208 kg
- Age restriction: 3 years
- Intended age group: 3 to 12 years
- Number of user: 1
- For a maximum fall height of 1000 mm safety surface must be according to EN 1176-1:2008 4.2.8.5 table 4.
- Spare parts for Bouncing element have to be purchased from the manufacture only.
- Small bouncing element according to EN 1176:2017 Chapter 1 4.2.16.1.
- Pit size: 1600x1600x600 mm (LxBxH)
- Needed combined frost protection and load bearing layer material: 0,5m<sup>3</sup>
- Lifting equipment is needed

### **3. Installation and assembly instructions**

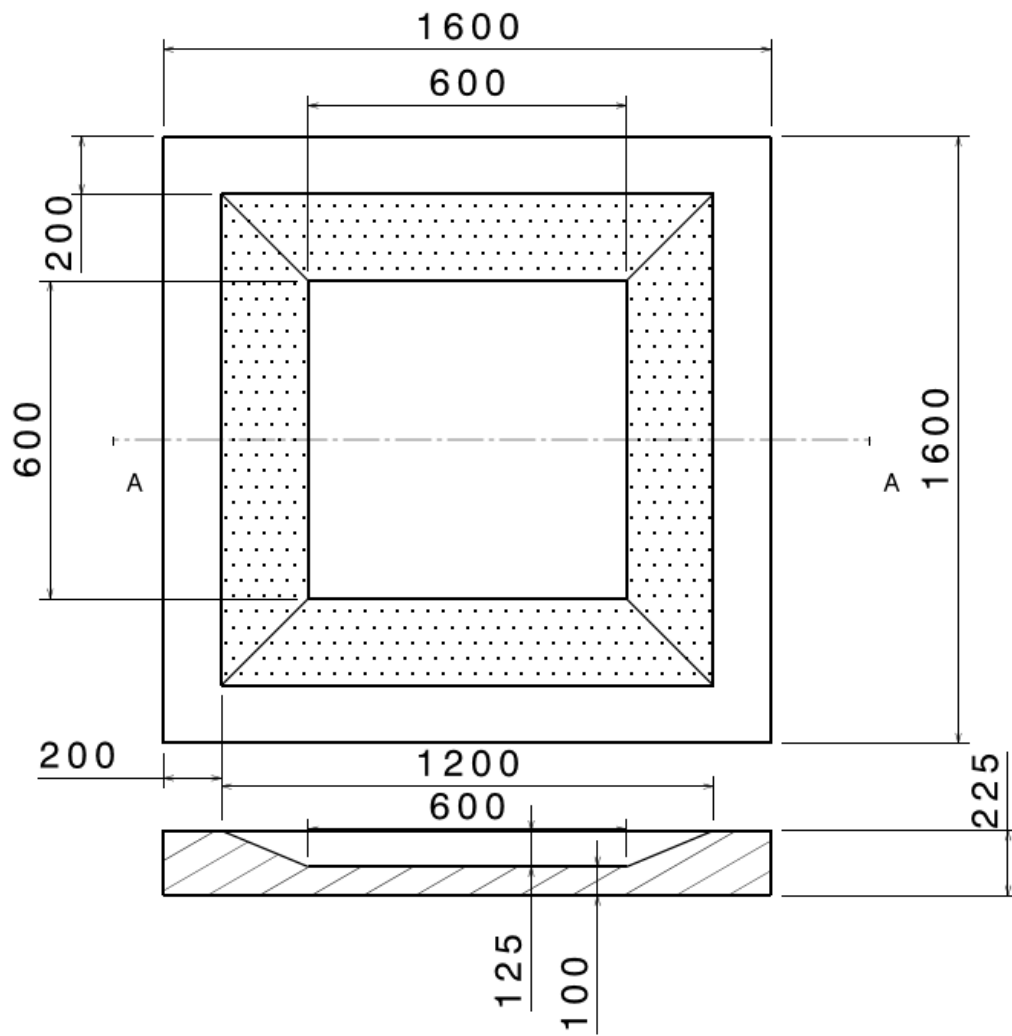
1. Dig pit: 1600x1600x600 mm
2. Create combined frost protection and load bearing layer as shown in chapter 4 drawing 2
3. Screw the eyebolts into the existing holes and use as lifting point
4. Lift Bouncing Element and place it in the middle of the pit
5. Unscrew eyebolts
6. Fill the gap with parts of excavation
7. Think about safety surface

## 4. Dimensions

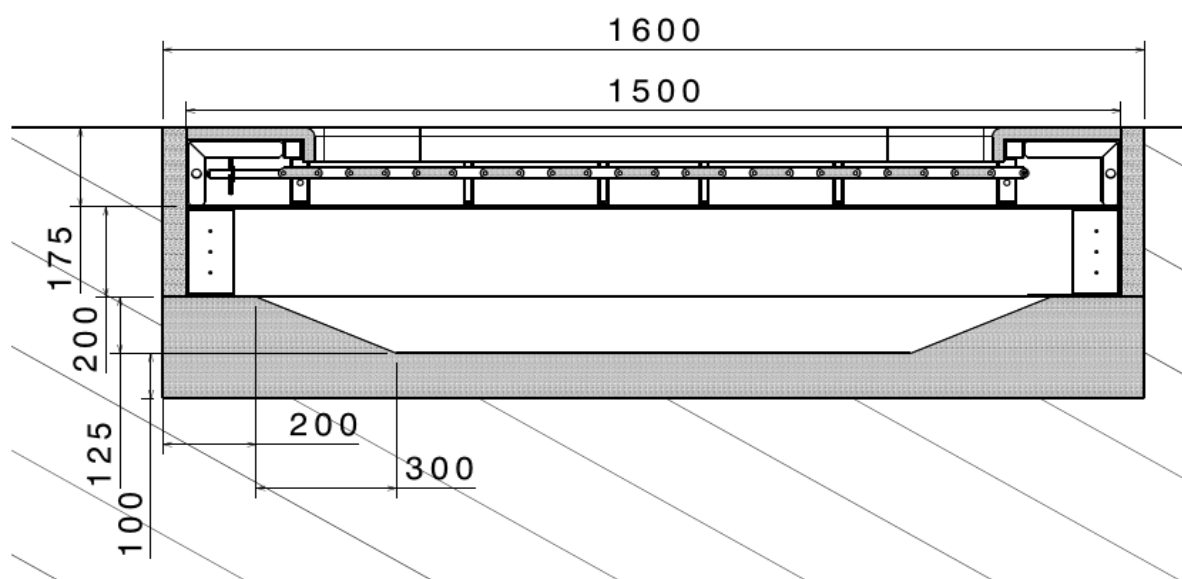


*Drawing 1: Dimensions impact area*

For a bouncing element, the extent of the clearance must be 1500 mm horizontally around the jump surface, measured at each point of the edge, and 3500 mm above the jump surface.



*Drawing 2: Combined frost protection and load bearing layer*



*Drawing 3: Cut through installed Bouncing Element*

## **5. Safety and user notes**

- No somersaults, belly and back jumps
- Consider maximum capacity 1 person
- No food / beverage
- No alcohol / drugs
- Wear shoes with flat sole

## **6. Documentation**

06.10.2016: New layout

06.10.2016: New dimensions

06.10.2016: New combined frost protection and load bearing layer

29.10.2018: According to DIN EN 1176:2017

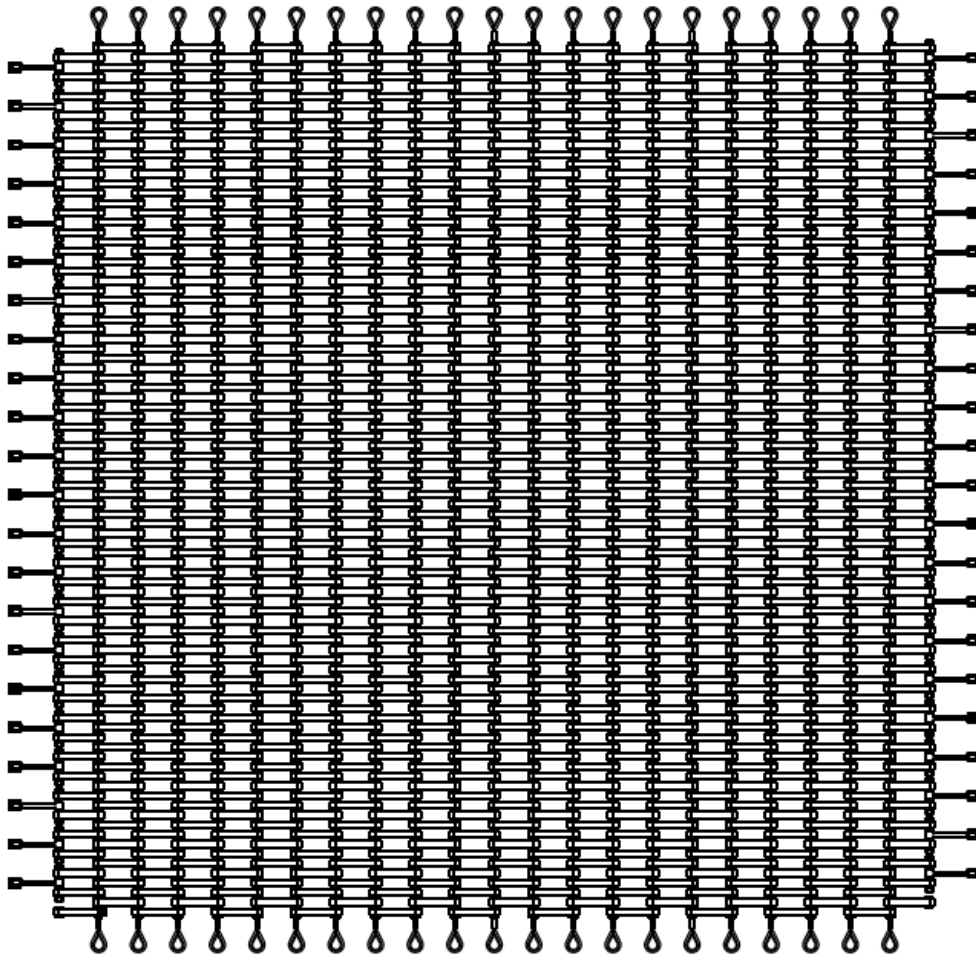


## 7. Parts

Bouncing mat complete

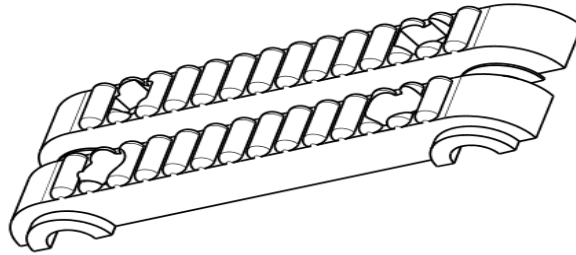
Just as complete unit

Item can deviate



Repair slat

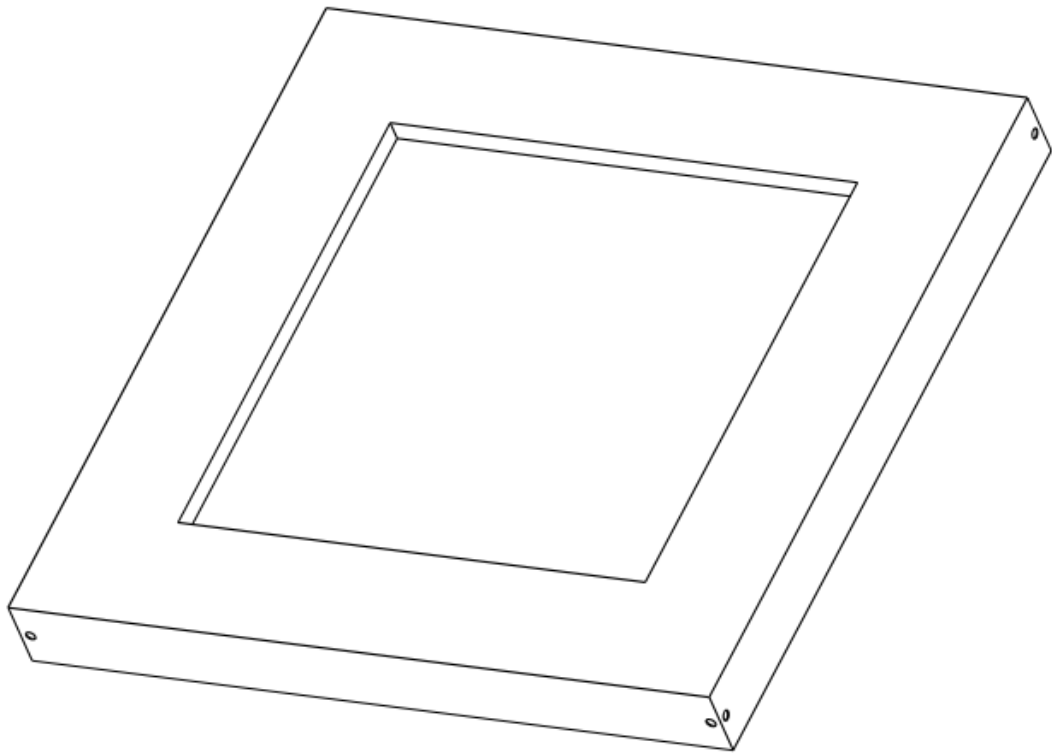
Item can deviate



Upper frame

Just as complete unit

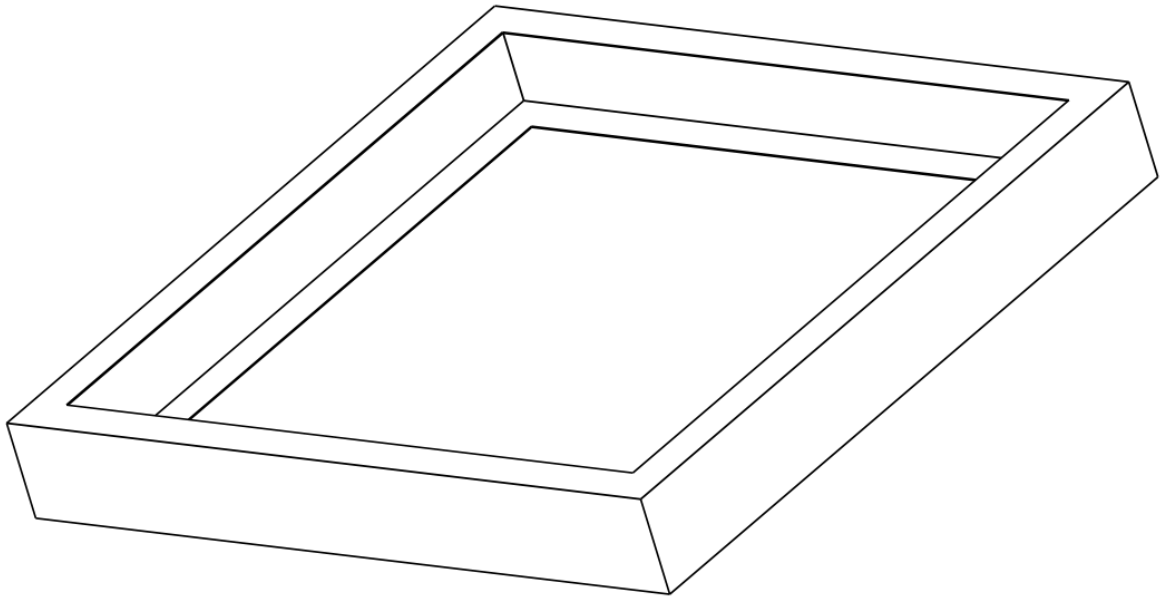
Item can deviate



Mounting frame

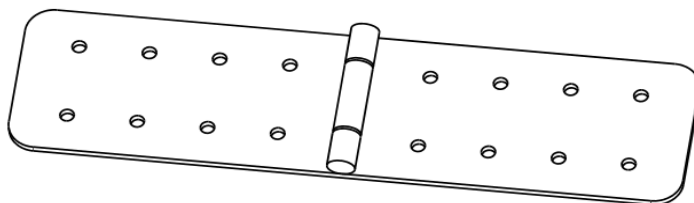
Just as complete unit

Item can deviate



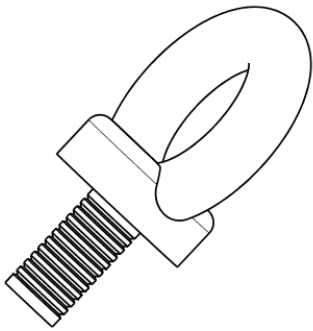
Hinge

Item can deviate



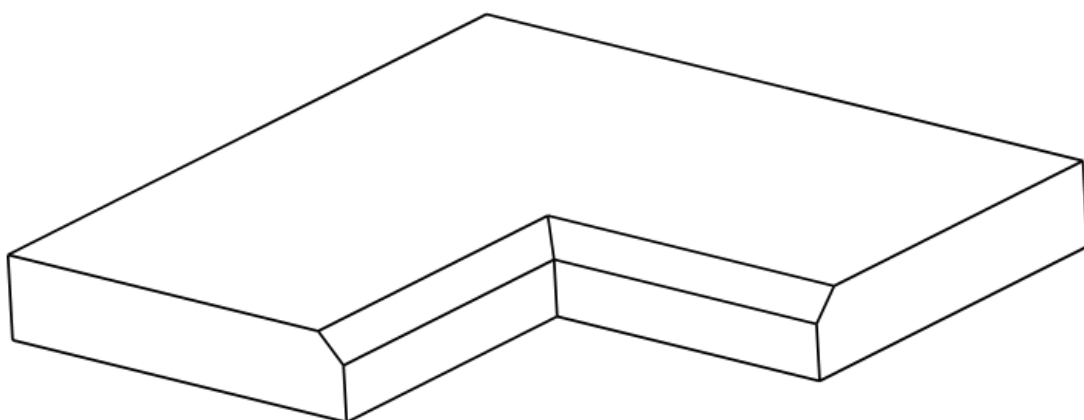
Ringscrew M12 galvanized DIN 580

Item can deviate



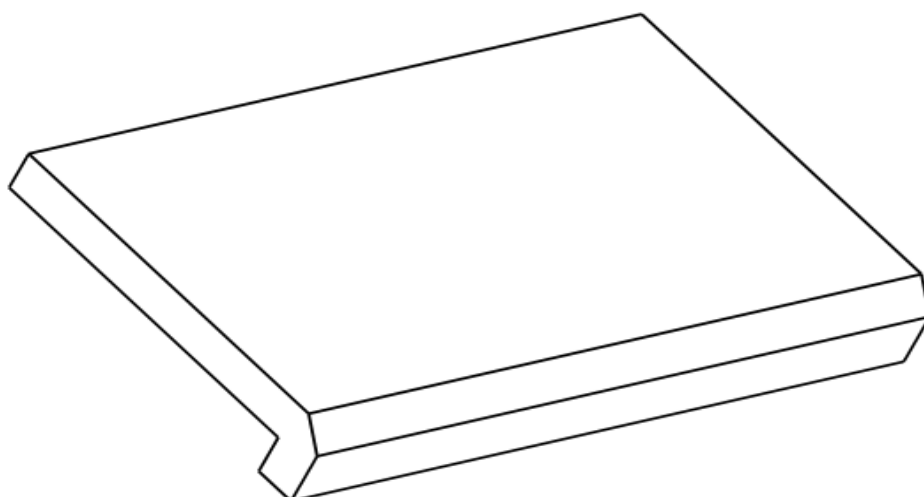
Safety surface corner

Item can deviate



Safety surface long

Item can deviate



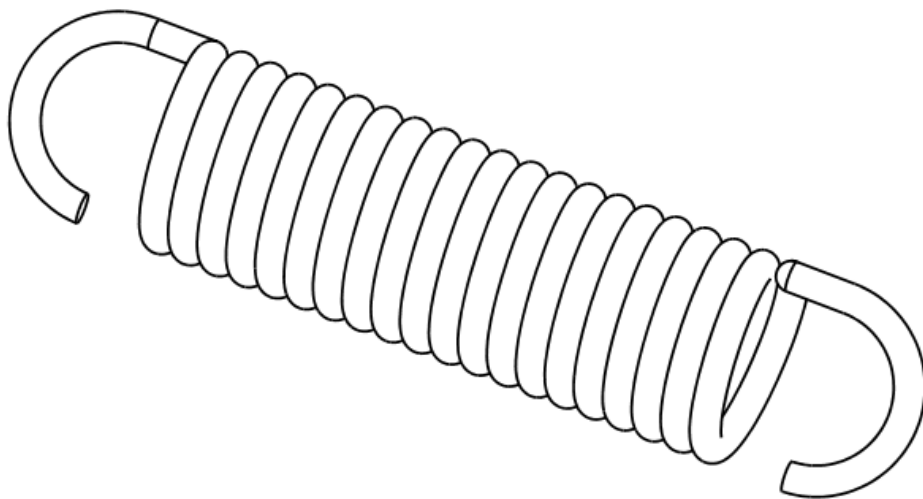
Allen-drilling screw 4,4x22

Item can deviate



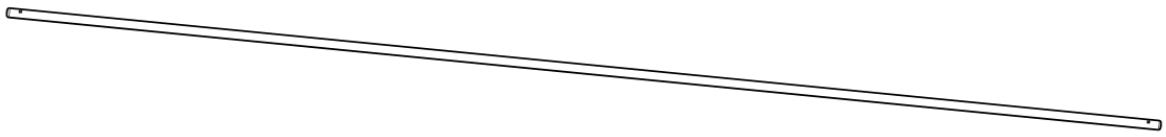
Tension spring tight winding

Item can deviate



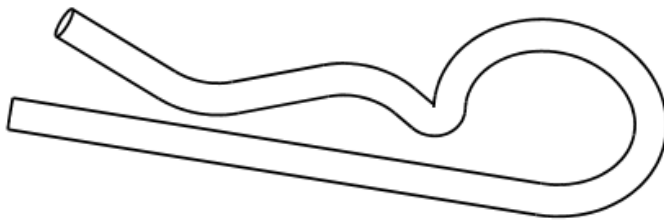
Support bar

Item can deviate



Snapping spring

Item can deviate



Glue for safety surface

Item n/a



## **8. Maintenance manual**

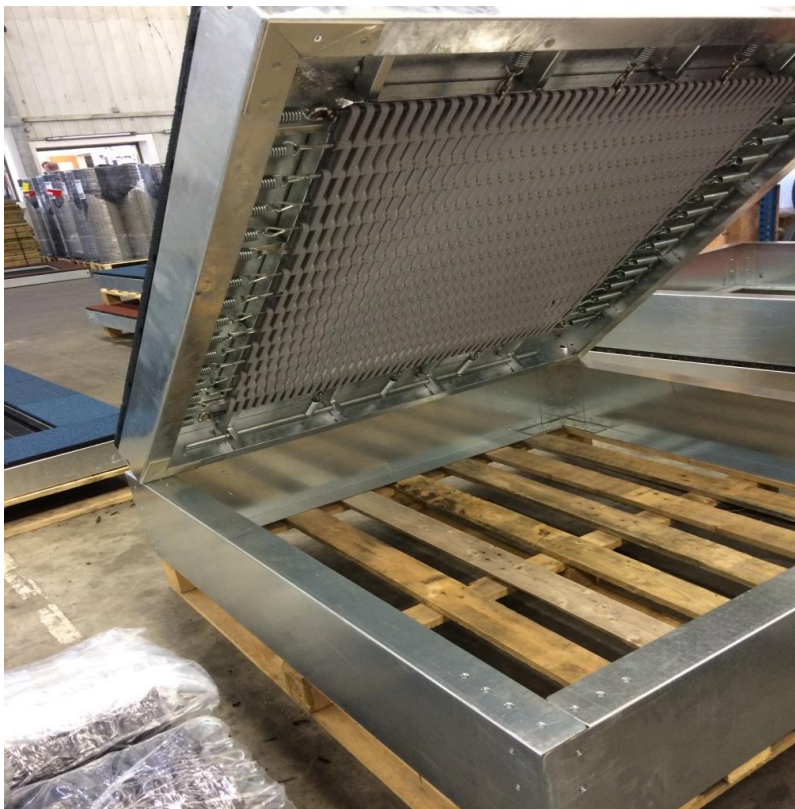
### **Special Information:**

- For heavily used or vandalized playgrounds, a daily inspection may be required.
- Control logs are to be kept.
- The checks must be carried out by knowledgeable staff.
- If safety-critical serious defects are detected during an inspection, they must be remedied immediately. If this is not possible, the system must be excluded from use, e.g. by decommissioning or dismantling.
- If a piece of equipment needs to be removed, e.g. for maintenance or repair, all anchors or foundations remaining in the ground should be removed or covered with covers. The device should be locked for use.
- It has been shown that one post items can pose higher risks to their stability; the stability test should therefore be carried out at least twice a year.
- The strength of the screw connection must be checked no later than 14 days after installation. Loose connections need to be tightened.

## **Special features bouncing element:**

The space under the jump surface can be controlled in 2 ways:

1: To do this, lift around the jumping equipment 20 cm wide and 20 cm deep sand / earth and loosen the hinge on one side. Open the jumping equipment and secure it against falling down. Remove all things on the combined frost protection and load bearing layer. Take into account that the clearance height is complied with in accordance with Chapter 5. Visually inspect the jumping device for damage. Check the springs for damage and deformation.



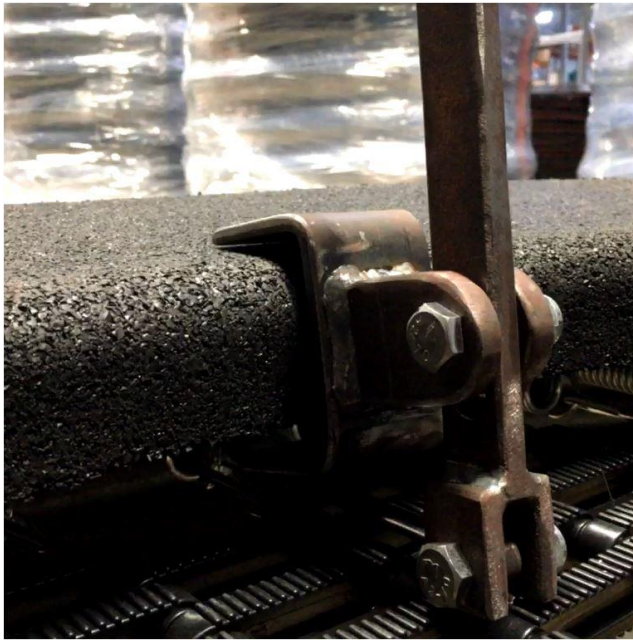
*Picture 1: Open bouncing element, example*

2: Using the hook tool available from R&T STAINLESS A/S, loosen the springs of the bouncing mat and remove the mat.

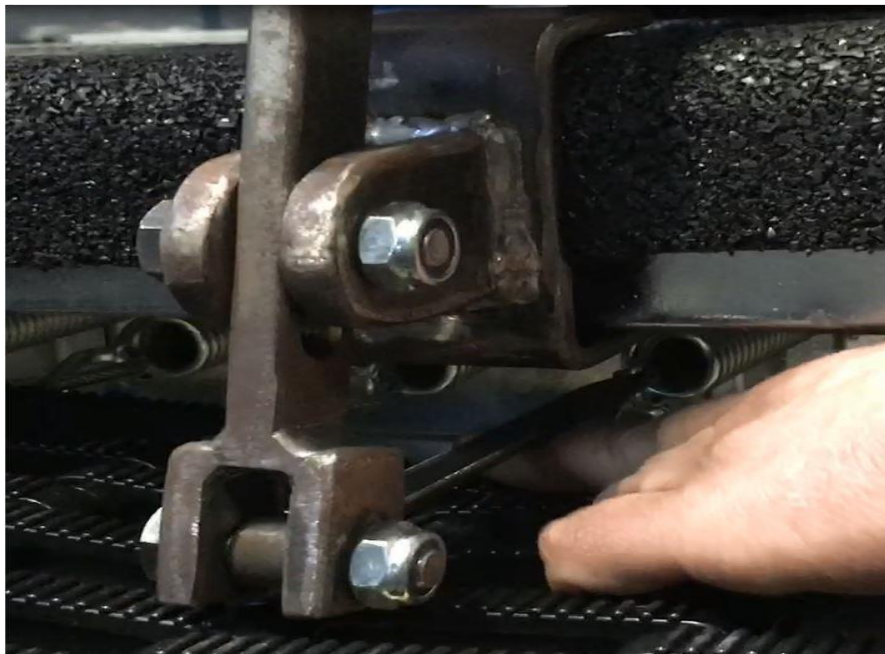
Remove all things on the combined frost protection and load bearing layer. Take into account that the clearance height is complied with in accordance with Chapter 5. Visually inspect jump devices for damage. Check the springs for damage and deformation.



*Picture 2: Hook tool*



*Picture 3: Right using direction of tool*



*Picture 4: Bring tension on spring*

The hook tool we attached to the fall protection. The hook points in the direction of the spring. Insert the eye of the spring into the hook opening and tension the spring by pulling on the lever. In doing so, move the thimble / holder down to release the mat. Replace the mat in reverse order.

Maintenance manual	1 to 3 weeks (visual inspection)	1 to 3 months (operational inspection)	1 time per year (main inspection)
<i>All steps could also be necessary more often depending on the location / external influences</i>			
Check for loss or vandalism.	X	X	X
Check the surfaces of metal and plastic for sharp-edged elements, scratches, cracks or similar and, if necessary, grind or renew.	X	X	X
Replace missing parts.	X	X	X
Remove dirt and other objects (stones, broken glass, etc.).	X	X	X
Check moving parts for easy operation.		X	X
Check the coverage of the foundations.		X	X
Check all fasteners and attachments for tightness and loss, tighten or replace.		X	X
Check screw connection and tighten if necessary.		X	X
Check ropes and rope connections for tightness and loss.		X	X
Maintenance manual	weeks (visual inspection)	months (operational inspection)	per year (main inspection)

<i>All steps could also be necessary more often depending on the location / external influences</i>			
Testing the stability of the device.		X	X
Check for traps.		X	X
Testing the fall protection coating.		X	X
Expose stand posts to the top of the foundation and check for corrosion.		X	X
Clean complete game device.			X
Check chain links for abrasion (1/3 maximum permissible).		X	X
Check ground clearance.		X	X

## Work documentation

Date	Kind of work	Name, Sign