

Mounting instructions table „mensa“

Item-No. 571520401 / 571521401



Item-No. 571520401

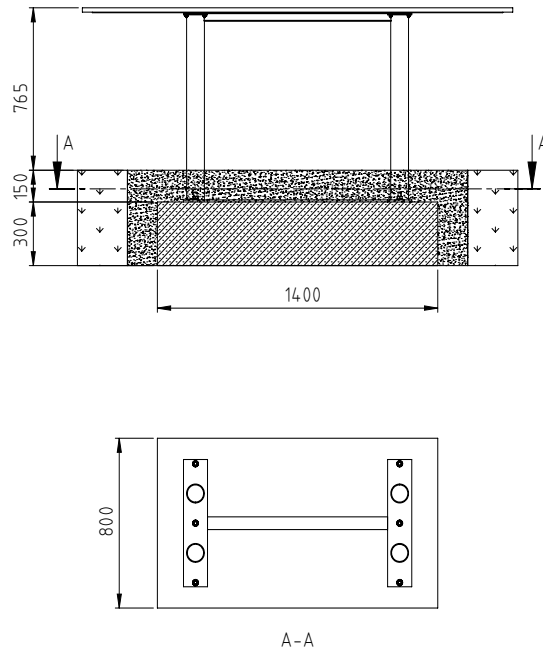
Diagram 1: Over all view



Item-No. 571521401

Mounting instructions table „mensa“

Item-No. 571520401 / 571521401



Legende

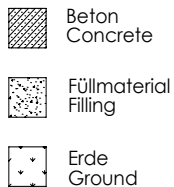


Diagram 2: Foundation

1. Set the location.
2. Carry out excavation work for the foundation as shown in diagram 2. After excavation compress the foundation floor.
3. Set up the concrete foundation acc. to the dimensions indicated in diagram 2 in the quality class C20/25 with central, horizontal reinforcement.
4. After a setting period of 10-14 days, depending on weather conditions and foundation size, clean the surface of the foundation. Place the base plates of the table onto the foundation and screw it with the foundation using the heavy duty dowels included in the delivery.
5. Fill up and compress the holes around the foundation with excavation and seal it with surface material.
6. Do not allow anyone to use the equipment before the installation has been finished.

Attention: If the urban furnitur has been incompletely installed or partly dismantled when carrying out maintenance and repair work, this may lead to particular risks of injury for the user. For this reason, make clearly visible that the equipment shall not be used in such cases.

NOTE: Urban furniture, which contain components made of stainless steel should not come with „normal“ steel parts in contact. Those steel parts may rub off and leave small steel particles in combination with moisture brown rust stains. If such corrosion occur on stainless steel parts, they are fine with an abrasive (240 grit) to remove.

Please take care when transporting and setting up the fact that the components are made of stainless steel with no „normal“ steel parts in contact.