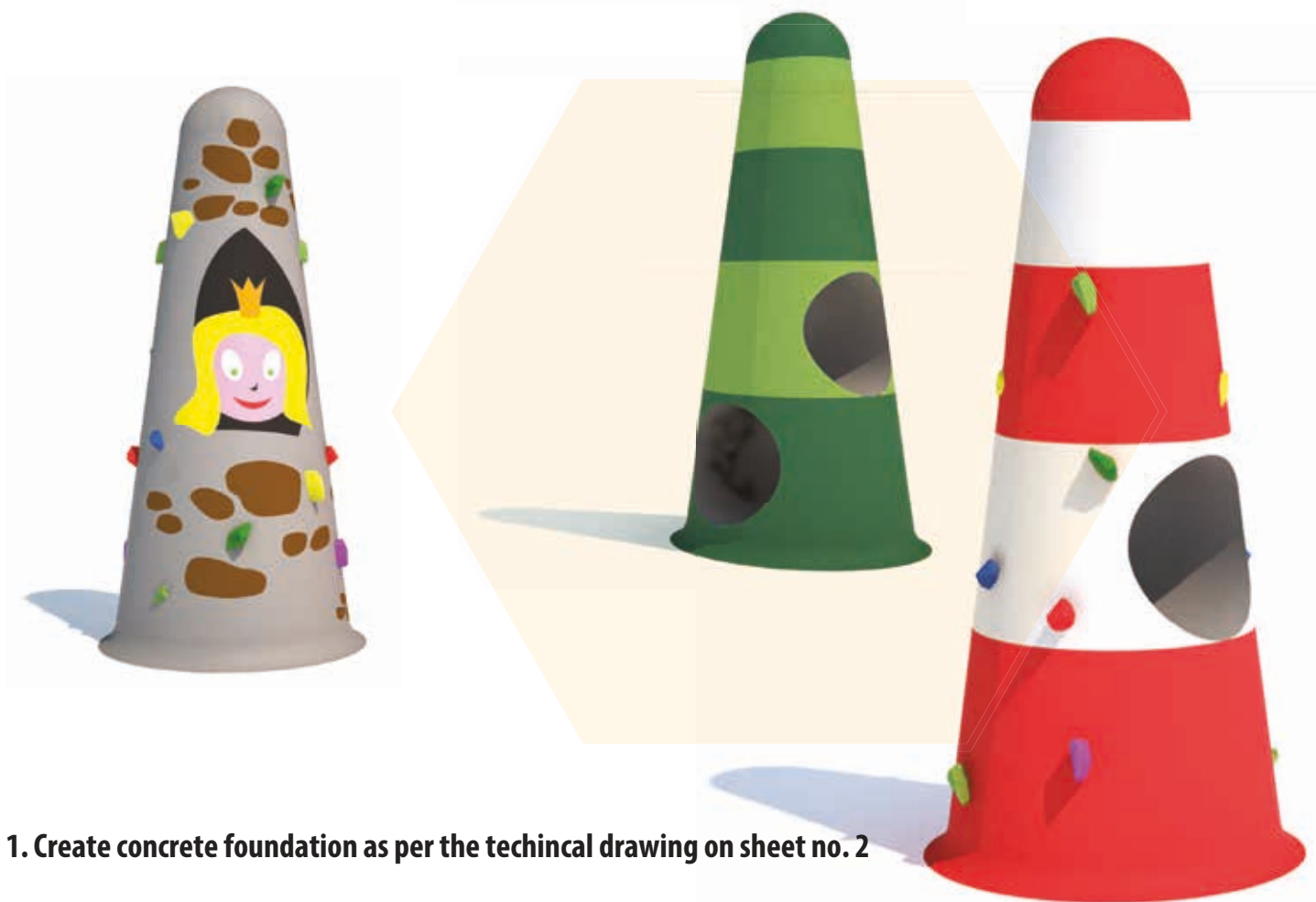


LIGHTHOUSE 1, 2 & 3



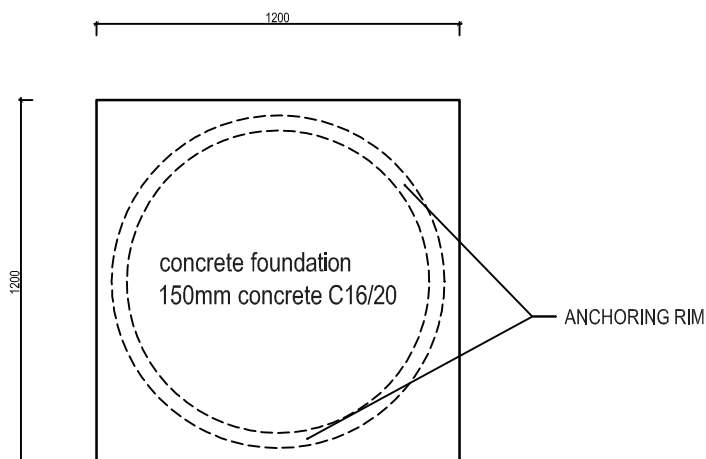
- 1. Create concrete foundation as per the technical drawing on sheet no. 2**
- 2. Place the 3D element onto hardened concrete and properly position it**
- 3. Drill holes (8mm in diameter) through the anchoring rims into the concrete foundation (85mm deep)**
- 4. Insert the attached wall plugs into the holes**
- 5. Fix the 3D element with the supplied bolts**
- 6. Cover the anchoring rims with the surrounding safety surfacing**

NOTE: Before installation please go through all the pages of these instructions carefully.

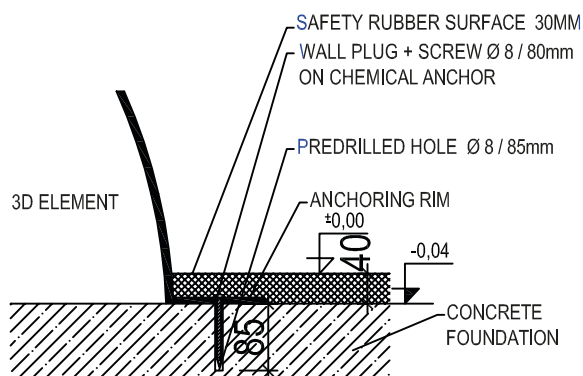
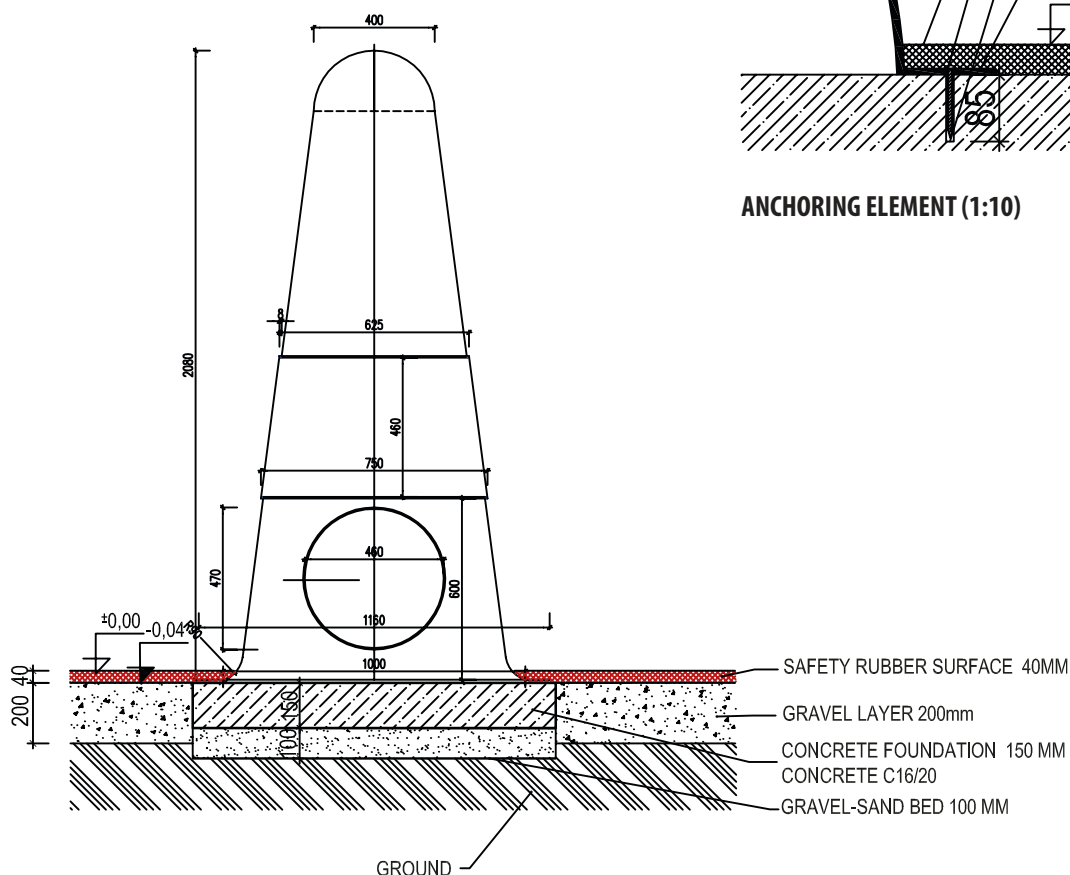
The equipment must be installed by professionals. The failure to install equipment according to installation instructions may result in safety hazards and void the warranty. In order to prevent any accidents, the play area must be restricted until installation is complete.

INSTALLATION

GROUND PLAN (1:25)



SECTION (1:25)



ANCHORING ELEMENT (1:10)

SAFETY & MAINTENANCE

SAFETY

Recommended Environment:

This product has been developed and designed for outdoor use and is also suitable for indoors. This product complies with European Norm EN1176. If there is a requirement for a safety surface around the product according to norm EN1177 it is strictly forbidden to use the product before a safety surface area is finished.

Operating instructions: The element should only be used after it has been installed strictly in accordance with manufacturer's instructions and thoroughly checked for defects.

- The product should not be used during any repairs or maintenance.
- There should be no sharp or hard objects that might result in injury.
- The owner is responsible for performing inspections and ensuring the maintenance of the products according to the manufacturer's instructions. All inspections and maintenance must be kept in written or electronic form.
- Spare parts that can be used are defined by the manufacturer.

MAINTENANCE

- The product can be brushed or vacuumed when necessary.
- When stained by pollution, pollen and dirt, clean with a pressure washer.
- Fallen leaves and dirt shall be removed regularly to prevent growth of moss, algae and weeds.
- The surface should be kept clear of coarse dirt (dirt, gravel etc.) that might damage the surface. It is recommended that access to the play area is adapted to prevent large amounts of dirt getting onto the product during rainy weather.
- Thin layers of snow should be removed by sweeping with a soft broom. When shoveling snow, proceed with caution.
- The product must be kept away from chemicals, sharp objects, knives, cigarettes, fire, stones, glass etc.
- Color fading has no impact on the product's quality and is not subject to a warranty claim. Colour stability is a maximum of 3 on the grey scale.

Ordinary Inspection

- visual (daily) - detecting and eliminating obvious threats caused by vandalism, usage or weather conditions. Removal of loose objects, hard or sharp objects and edges. Frequency of inspections: **DAILY**
- visual (monthly) - review of safety surface, replenishment of any materials to level the terrain. Frequency of inspections: **MONTHLY**

Operational Inspection

- this inspection is focused on the operation, stability and degradation of the products. A complete clean and inspection of the play elements should be done. Damaged parts should be replaced by new parts supplied by the manufacturer. Frequency of inspections: **QUARTERLY**

Major Inspection

- the aim of this inspection is to ensure maximum safety of all parts, surfaces, foundations and elements. An inspection of anchorage and substructures should be carried out. Yearly inspections should also include the ordinary and operational checks. We recommend the yearly inspection should be carried out by a qualified playground inspector. Frequency of inspections: **YEARLY**

GENERAL

Other responsibilities of the owner are based on regulations, such as EN 1176, EN 1177 and local laws.

For the sake of children's safety, perform these checks in full to prevent any injuries.



Head Office -
Playtop Licensing Ltd,
Jessop Way, Newark,
Nottinghamshire,
NG24 2ER, England.

Tel: +44(0)1636 642461
Email: info@playtop.com

Scandinavia -
Playtop Licensing Ltd,
Sverigesgade 16, 4
5000 Odense C,
Denmark.

Tel: +45 66 11 42 82
Email: contact@playtop.com

playtop.com

