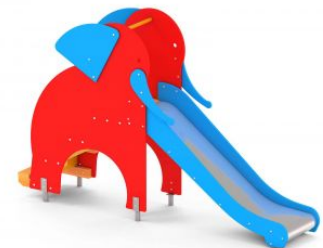
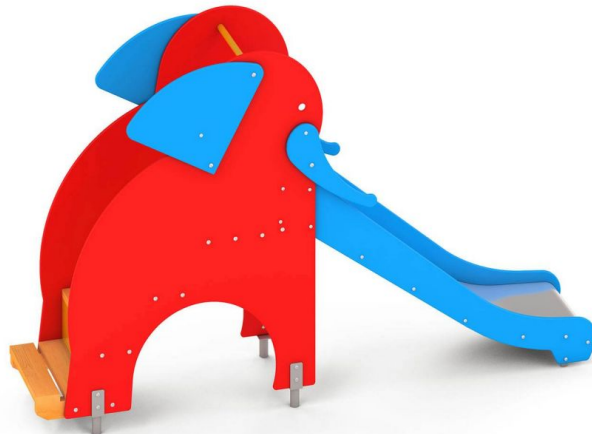




**NOVUM**

**1022EPON**

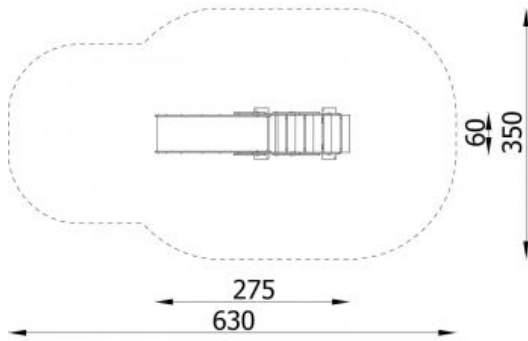


## Description

Designed for the youngest users. It has comfortable stairs that are easy to overcome and high safety barriers. It is an indispensable element of every playground. Made of the highest quality materials, durable and safe. Provides great fun, it is an ideal place to use children's energy. Entry in the form of comfortable steps makes it easier for the youngest children to have access to the slide.

<b>Model type</b>	Solitaire
<b>Serial number</b>	1022EPON
<b>Equipment name</b>	Elephant slide 1022

*Join the action!*



<b>Product line</b>	Action Slides Solitair
<b>Age range</b>	3 - 12
<b>Unit measurements</b>	60cm x 275cm x 172cm
<b>Required surface area</b>	350cm x 630cm
<b>Impact area</b>	19m <sup>2</sup>
<b>Free height of fall</b>	93cm
<b>Material</b>	Steel Anchors. HDPE Safety Panels. Stainless Steel Slide. Steel elements protected against corrosion by zinc primer and powder coating. All fittings and connectors are weather and UV resistant.
<b>Heaviest part</b>	70kg
<b>Largest part</b>	65cm - 300cm
<b>Spare parts</b>	Available
<b>Installation time without grondwork</b>	2 hour(s) / 2 person(s)
<b>Special tools</b>	Included
<b>Anchoring</b>	Poles are fixed in the ground at a depth of 60 cm on steel anchors. Concrete according to the assembly instructions.
<b>Remarks</b>	No

