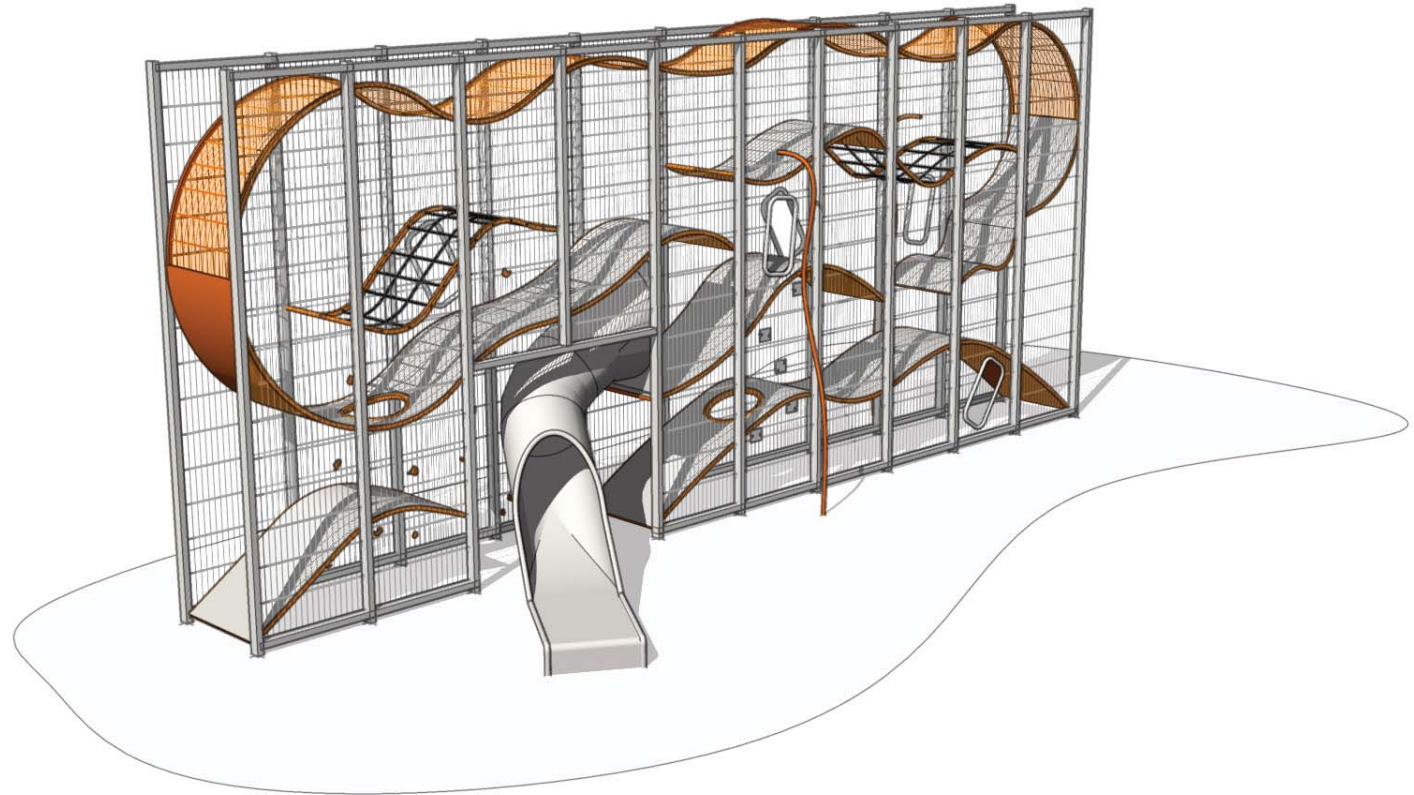
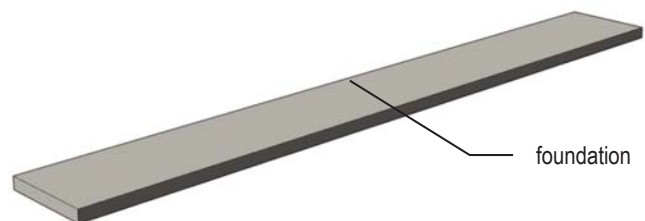


assembly instructions

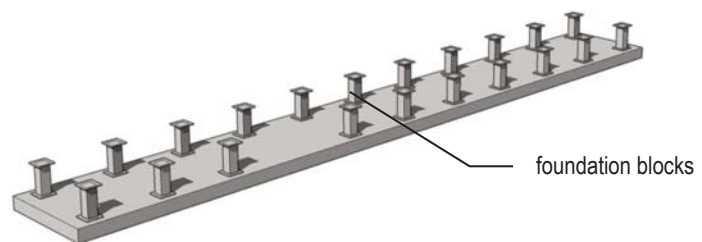
wall-holla



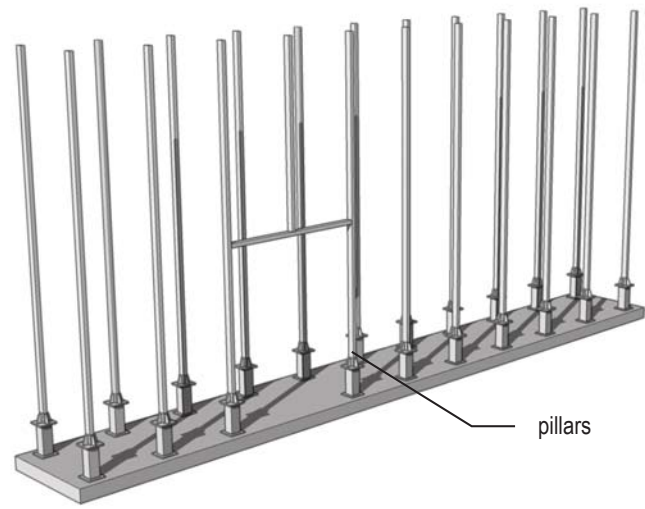
step 01
dig cunette and install foundation



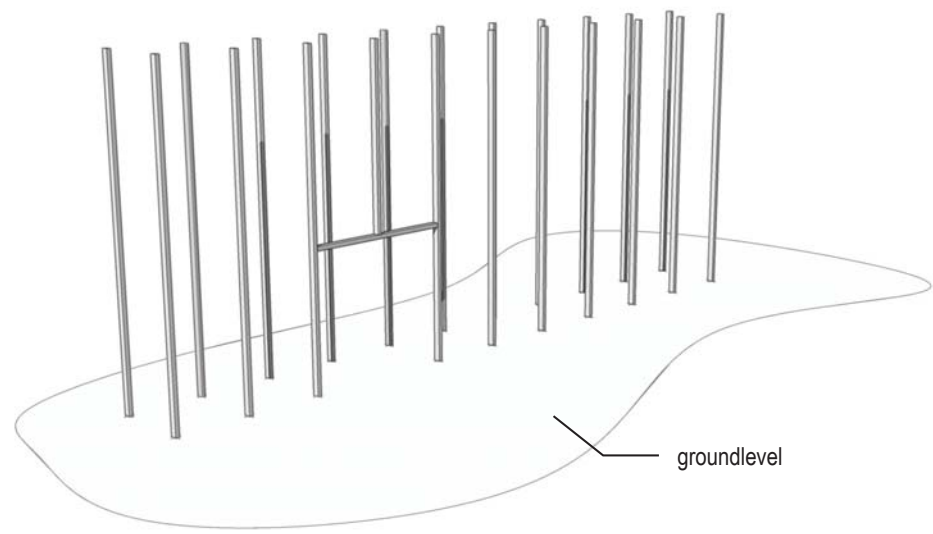
step 02
install the foundation blocks at the foundation with anchors M12x200mm (included in the package)



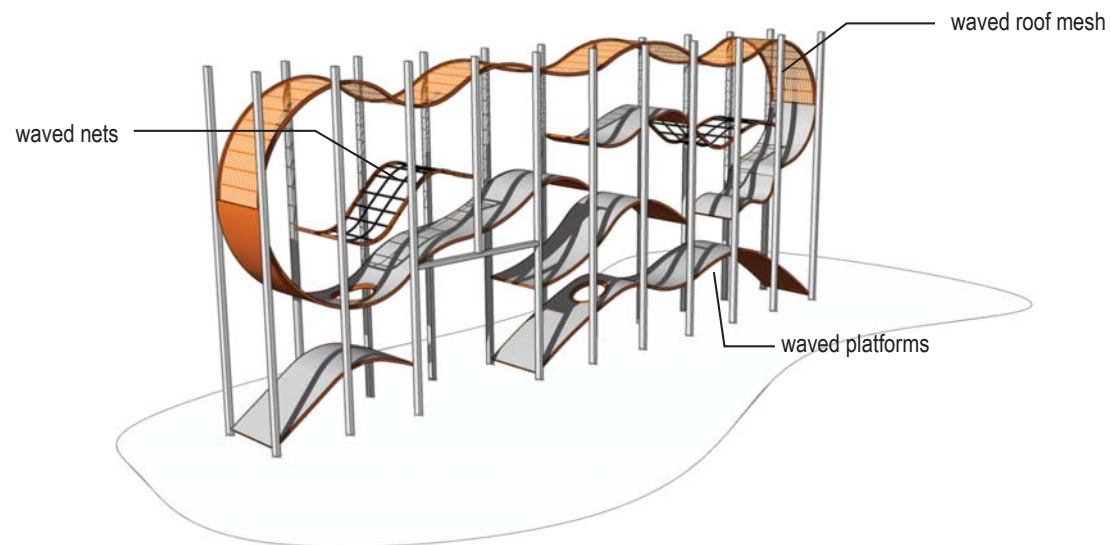
step 03
install pillars on the foundation blocks



step 04
after installation of pillars, fill up the cunette and prepare for safety surface



step 05
install the waved platforms, protection
covers and roof mesh.



heavy platforms can be lifted with
supplied pully block, see picture
below.

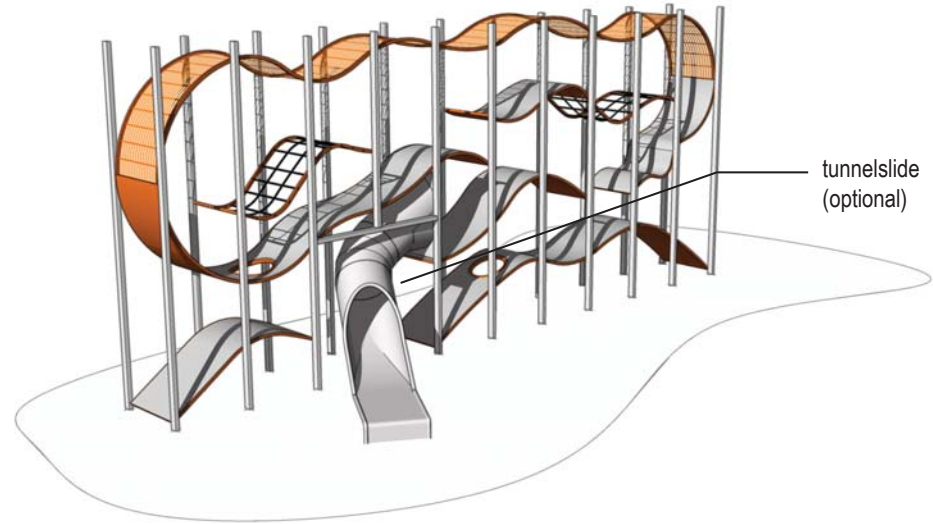


start with the lower waves en
work up

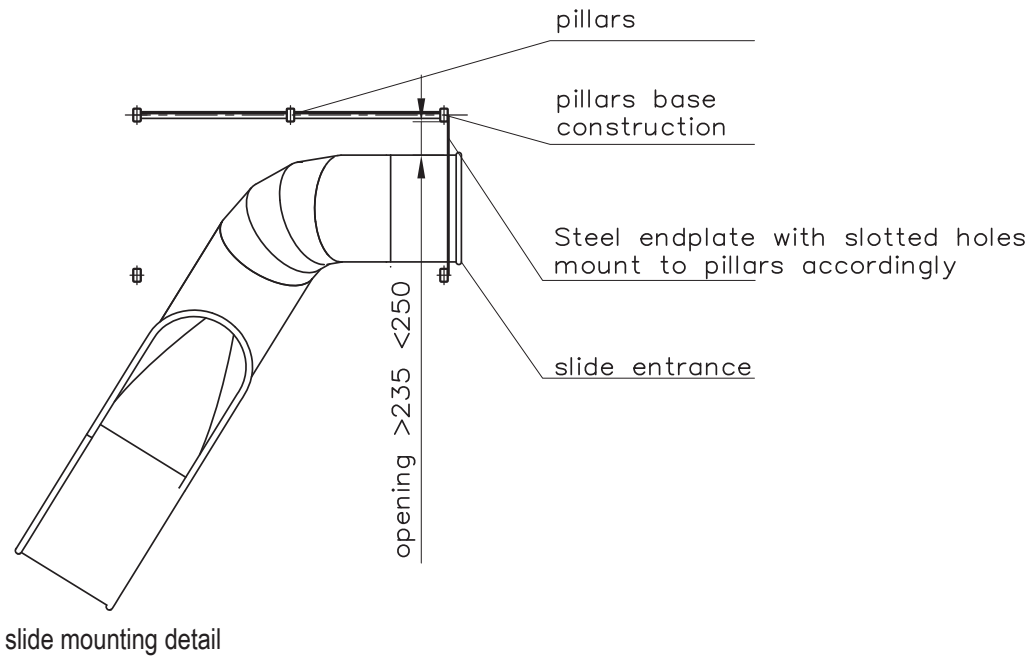


install the roof mesh

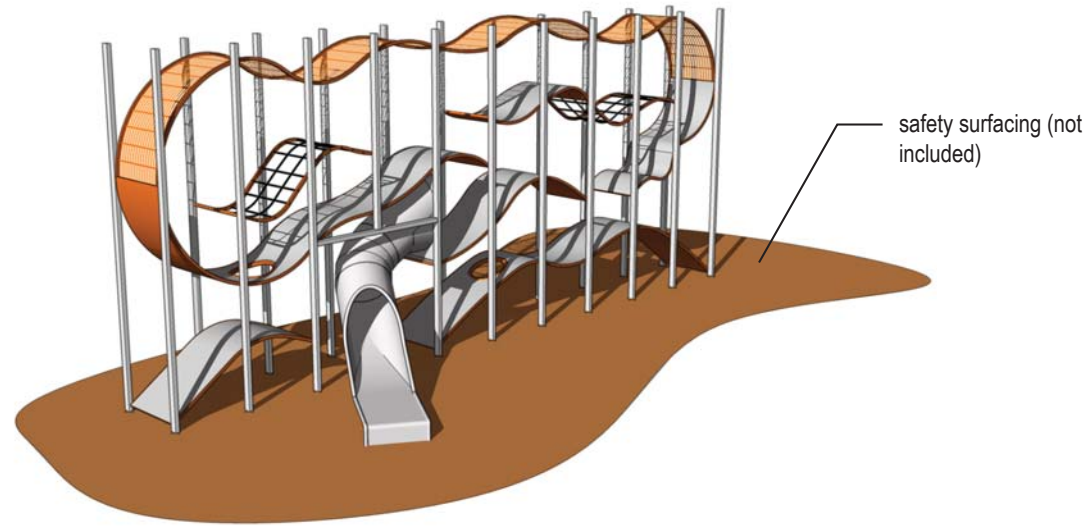
step 06 (optional)
mount the slide on the platform



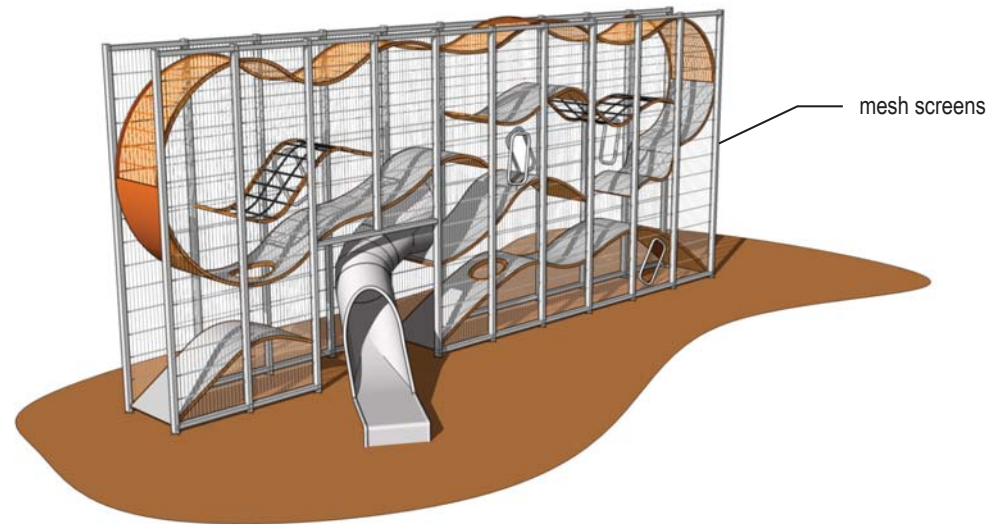
when mounting the slide to the pillars, make sure that the room between the slide and the back pillar is $>235\text{mm}$ and $<250\text{mm}$ to prevent entrapments



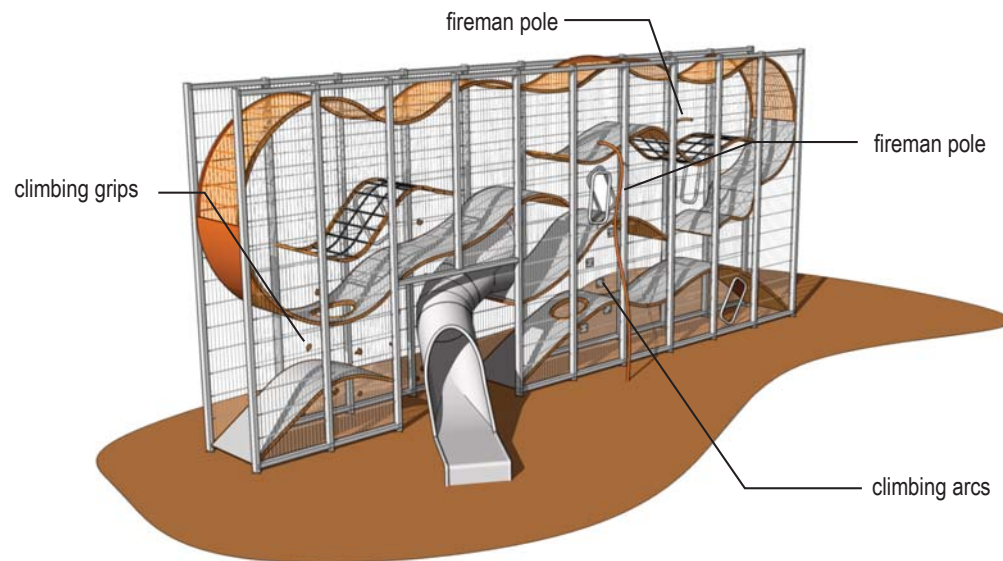
step 07
install safety surfacing



step 08
mount mesh screens between the pillars



step 09
mount play elements like the climbing grips,
climbing arcs, firemanpoles etc.



The climbing grips placed on the Wallholla create different climbing routes towards an entrance on a height of max 2450mm.

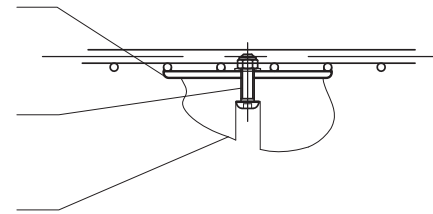
The grips are fixed on metal plates with bolts and glue to prevent any movement.

The grips need to be placed in the same direction as the grips on the preview photos to prevent entrapment!

steel mounting plate
126x140x5mm
welded to mesh

stainless steel bolt round
head with hexagonal
socket and self locking
nut and ring M8x60mm

epoxy cast climbing hold



mounting detail climbing grip

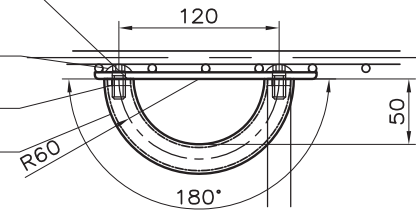
The climbing arcs placed on the Wallholla create different climbing routes towards an entrance on a height of max 2450mm.

steel mounting plate
170x140x5mm
welded to mesh

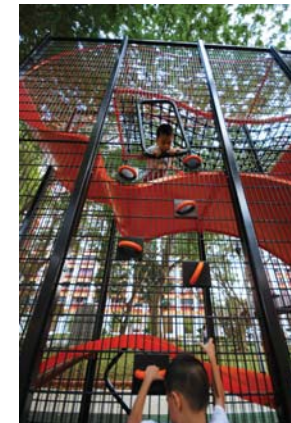
roundhead bolt M10
hex socket

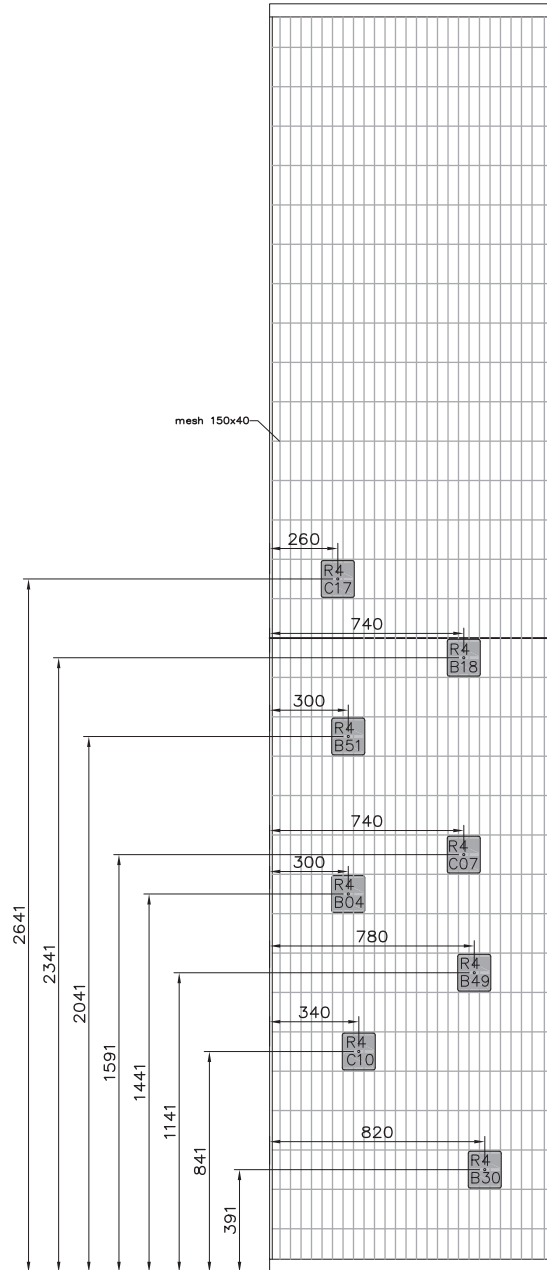
weldnut M10

bent pipe $\varnothing 21,3 \times 2,35$
welded to plate



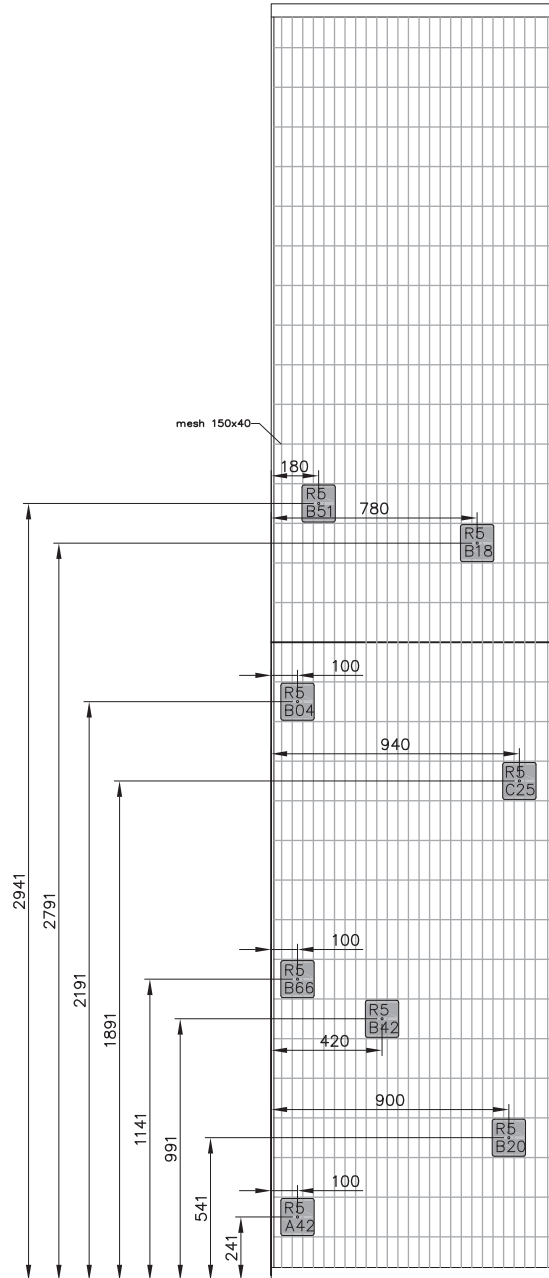
mounting detail climbing arc





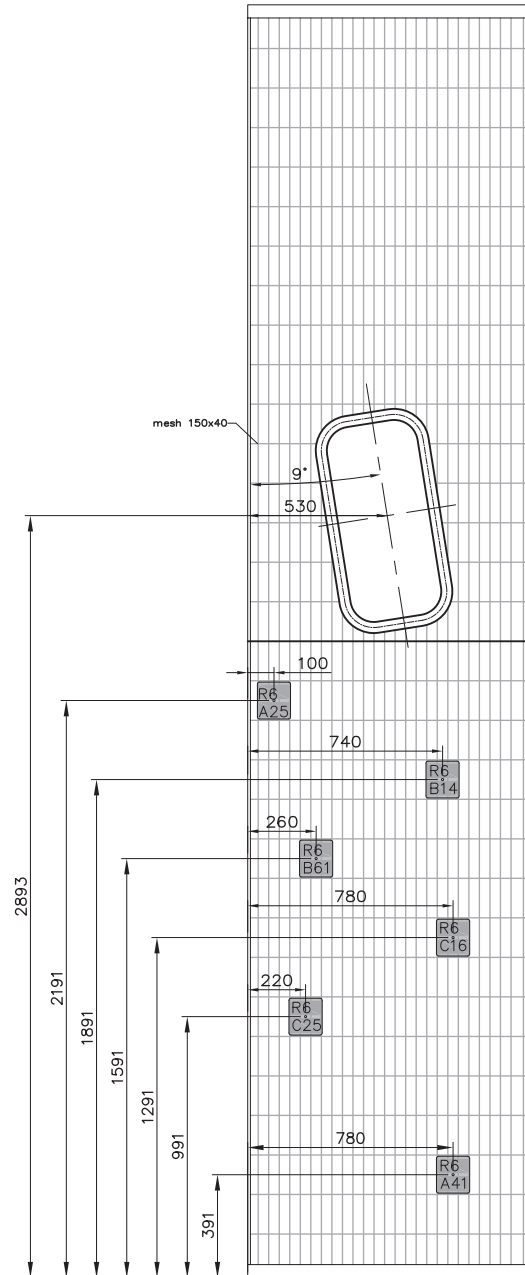
Route, Type 4,
Gradation: 3 (beginner)

(Gradation based on Fontainebleau scale)



Route, Type 5
 Gradation: 4+ (simpl)

(Gradation based on Fontainebleau scale)



Route, Type 6
 Gradation: 3 (beginner)

(Gradation based on Fontainebleau scale)

Please note:

The climbing grips are coded, these correspond with the codes of the climbing holds from the assortment of "Vertigo Klimwanden"

(see: <http://www.vertigo-klimwanden.nl/nl/products/holds/holdsoverview.html>)



designed by

Carve v.o.f.

design | and | engineering

Kortenaerplein 34
1057 NE Amsterdam
The Netherlands

t| +31 20 427 5711
f| +31 20 427 5712
e| info@carve.nl

produced by

Segno d' Arte

Ambachtsweg 5c
2964 LG Groot-Ammers
The Netherlands

t| 0184-688712 / 06-51848420
f| 0184-688711
e| info@segnodarte.nl