

# JUMPOO 2214



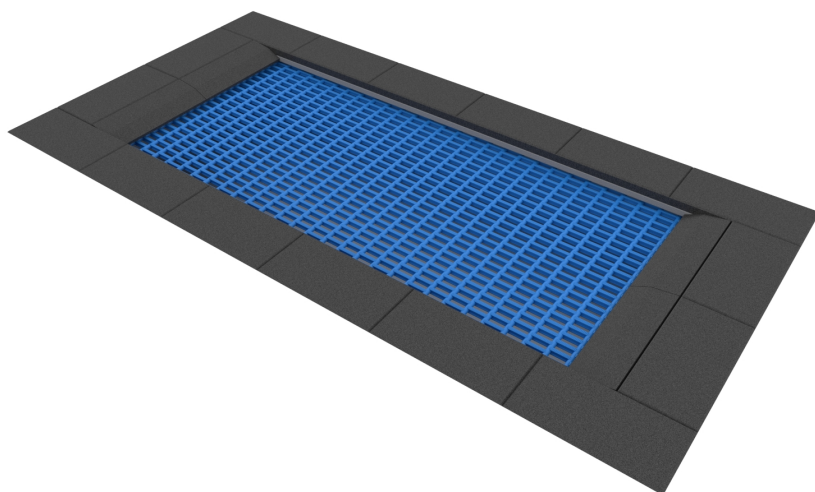
4 - 15 years



1 kids



27,3 m<sup>2</sup>



## Material specification

- Construction made of hot-dip galvanised steel, mounted below the ground surface,
- The edges of the structure covered with a rubber rim SBR glued to the frame or without rubber rim,
- Jumping mat: made of polypropylene lamellas, threaded on a stainless steel rope,
- Fastening on durable galvanized springs inside the structure,



**Facilitating disability**



easy access



**Physical development**

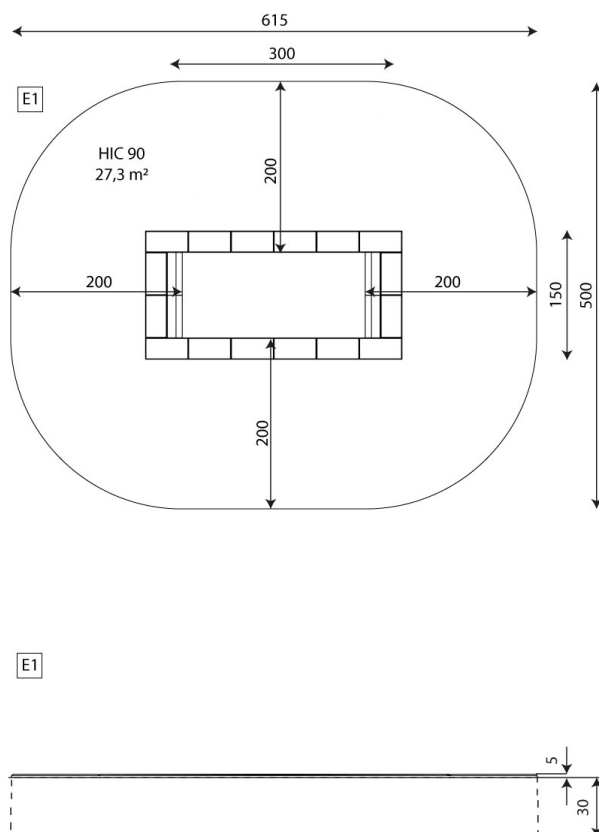


balance



community





## Product technical sheet

# JUMPOO 2214

### Product data

|                                |                     |
|--------------------------------|---------------------|
| Length                         | 300 cm              |
| Width                          | 150 cm              |
| Total height                   | 5 cm                |
| Age group                      | 4 - 15 years        |
| Number of users                | 1 kids              |
| Safety zone                    | 27,3 m <sup>2</sup> |
| Free fall height               | 90 cm               |
| In accordance with norm EN     | 1176-1:2017+A1:2023 |
| Weight of the heaviest part    | 203 kg              |
| Dimensions of the largest part | 300x150x31 cm       |
| Availability of spare parts    | YES                 |
| Installation time              | 2 h                 |
| Color options                  |                     |

Data is subject to change without prior notice.

### Additional information

- equipment adapted for the disabled; intended for public playgrounds;
- equipment has a certificate issued by an accredited entity or a declaration of conformity;
- no sharp edges or chinks that would pose a danger of jamming the head, fingers or any other body parts;
- anchoring on flat surface, 30 cm deep;
- render is for reference only, the actual appearance of the equipment and its color may vary;

## Guarantee

**30**

30 year guarantee - Durability of steel and stainless steel structural elements

**15**

15 year guarantee - Durability of steel and stainless steel structures of mobile devices; durability of Robinia wood structural elements

**10**

10 year guarantee - Structural strength of HDPE, 100% recycled HDPE and HPL elements; structural elements made of 100% recycled material (composite)

**5**

5 year guarantee - Corrosion resistance of stainless steel and hot-dip galvanized and powder-coated steel elements, resistance to bark beetles and rotting of wooden structural elements

Detailed information in the guarantee card



## Surfaces according to EN 1176-1:2017+A1:2023

|                                 | Description (mm)             | Layer thickness (cm) | Maximum fall heights (cm) |
|---------------------------------|------------------------------|----------------------|---------------------------|
| Turf/ top layer of soil (A,B,C) | -                            | -                    | ≤100                      |
| bark (A,C)                      | Particle size from 20 to 80  | 30                   | ≤200                      |
|                                 |                              | 40                   | ≤300                      |
| woodchips (A,C)                 | Particle size from 5 to 30   | 30                   | ≤200                      |
|                                 |                              | 40                   | ≤300                      |
| sand or gravel (A,C)            | Particle size from 0,25 to 8 | 30                   | ≤200                      |
|                                 |                              | 40                   | ≤300                      |
| synthetic attested (A,B,C)      | Tested according to EN 1177  |                      | 90                        |

## Product technical sheet

# JUMPOO 2214

### Amount of safe surface corresponding with free fall height:

HIC 90 27,3 m<sup>2</sup>

Data is subject to change without prior notice.

